

Volume I Number 1  
1978

Kansas City, Missouri

#12

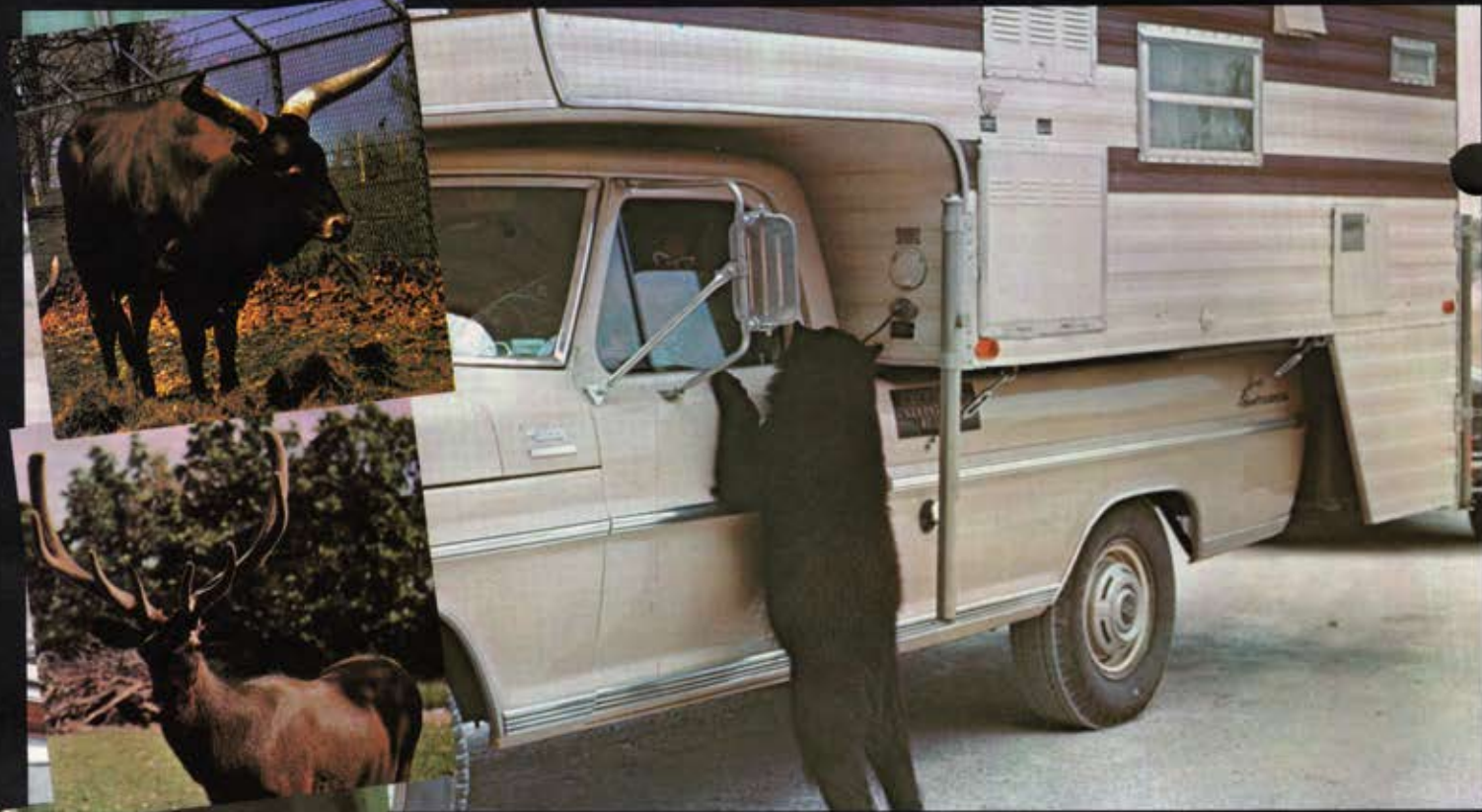
# GREAT TIMES



THE OFFICIAL  
MAGAZINE OF

# Worlds of Fun<sup>®</sup>





# BUENA VISTA'S Exotic Animal Paradise

12 MILES EAST OF SPRINGFIELD, MO. ON I-44

An enchanted adventure with over "3000 wild exotic animals and birds" from around the world awaits your visit to Buena Vista's Exotic Animal Paradise. Drive through in the comfort and security of your own car. 9 miles of paved and beautifully landscaped thoroughfare that meanders through 400 acres of this tamed exotic wilderness filled with lakes, ponds and herds of wild animals and rare birds, roaming free as only nature meant for it to be. Buena Vista's Exotic Animal Paradise is AAA approved and is a great way for people of all ages to know nature better. Exotic Animal Paradise is America's largest and greatest wild animal attraction. Located in the Heart of the Ozarks which is only a short drive from anywhere in the mid-west. Don't miss it—you will love every minute—EXCITING.

Herds of Buffalo, Deer, Llamas, Yak, Zebra, Watusi Cattle, Zebu, Oryx, Addax, Blackbuck Antelopes, Elk, Eland, Camels, Ostrich, Emus, Rheas, Ibex, Nelgai and so many more, too numerous to list. "An experience you will never stop talking about."

—Heaven for Camera Bugs—

**GROUP RATES**  
FOR INFORMATION WRITE  
EXOTIC ANIMAL PARADISE

RT. 1, STRAFFORD, MO. - 417-468-2016





#12



# Welcome to Worlds of Fun

KANSAS CITY'S  
FAMILY FUN  
ADVENTURE

Worlds of Fun encompasses 153 acres of exciting rides, live shows, restaurants, shops and other attractions. They are all here for your enjoyment. We hope this program will provide information to assist you in planning your visit. Remember, if you have any questions, please don't hesitate to ask any of our Ambassadors. They are always happy to assist you. Have a Great Time!

## PARKING

A parking fee of \$1.00 is required of all vehicles except buses. The *Great Times* program is included with your parking fee. Please note the number and area where you park so you will be able to locate your car after your visit. If you desire to leave the parking lot and return the same day, present your numbered parking ticket for free readmission. During peak exiting hours, we suggest you consider walking from the park to the parking lot. A walkway from the Scandinavian exit has been provided for this purpose.

## HOLIDAY SCIENCE DIET KENNELS:

The European plan is available for your vacationing dog or cat at the air-conditioned kennel (tram stop #1). Free lodging and meals for your pets are provided by Holiday Science Diet, and an attendant is on duty at all times. Take advantage of this fine facility. Pets are **not** permitted in the park.

## PICNIC AREA

Worlds of Fun welcomes families and groups to bring picnic lunches. Picnic Hollow is conveniently located near tram stop #1. Sorry, we cannot permit picnics in the parking lot or in the park.

## ADMISSION

It's the best entertainment buy anywhere. Your pay-one-price passport ticket includes main gate admission and as many rides, shows, attractions and special events as you can see and do. No other tickets are required in the park. Only souvenirs, gifts, games and food are individually priced.

ONE-DAY PASSPORT .....	\$ 8.95	Adult or Child
TWO-DAY PASSPORT (Consecutive days only) .....	\$11.95	(Children under 3 free)
SEASON PASSPORT (Unlimited use!) .....	\$29.95	

For your convenience, Worlds of Fun accepts American Express, Master Charge and Visa. With proper identification, personal checks may be cashed at our Guest Relations office at the main entrance.

## STROLLERS AND WHEELCHAIRS

A limited supply of free strollers for small children are available on a first come, first served basis. Most can be found just inside the main entrance. Wheelchairs may be obtained at Guest Relations. We take reservations for wheelchairs only.

## DRESS

While the dress at Worlds of Fun is known as casual and carefree, proper attire, which includes shirts and shoes, is required.

## CAMERA AND FILM

Free cameras are available for your use at the camera shop. The Snap Shot Shop is located in the Americana section near the main entrance.

## FIRST AID

The First Aid station is located in the Scandinavian section near the Schussboomer roller coaster. Any of our Ambassadors or park rangers will direct you. Our first aid staff is on duty at all times. However, they cannot dispense medication. Medication such as aspirin may be purchased at Fjord's Pharmacy in the Baltic Bazaar area of Scandinavia.

## RAIN CHECKS

Worlds of Fun remains open under most weather conditions. Certain rides, however, must close briefly during inclement weather for the safety of our guests. Because of the variety of shows, rides and other attractions that are unaffected by the weather, we do not issue rain checks or refunds.



## COVER

The all-new Barnstormer ride sweeps you up 10 stories high, whirls you around and drops you into a breathtaking, 60-foot plunge. It's super speed, super thrills, super-duper excitement.

The Barnstormer ride is the focal point of an entirely new early-aviation themed area for 1978 called Aerodrome.

## GENERAL OFFICES:

4545 Worlds of Fun Avenue  
(I-435 at Exit 54)  
Kansas City, MO 64161  
Phone (816) 454-4545

*Great Times* is a feature magazine published annually by Worlds of Fun and is distributed free to each vehicle arriving at Worlds of Fun. All rights reserved. Reprint of material only upon written approval of the copyright owner-Worlds of Fun. Advertising rates upon request.

ART DIRECTION: Thrasher Associates

# Our clients have more fun.

We're proud to be the advertising agency for Worlds of Fun. We have many clients, in all kinds of different businesses, but one thing they all agree on is advertising is more fun when it works.

# BB

Bernstein/Rein & Boasberg  
Advertising 756-0640



• NASHUA NURSERIES

HWY. 291	(OLD 71 BY-PASS)
HWY. 169	N. OAK

Suppliers of  
"GREEN SURVIVAL"  
to Worlds of Fun

734-2910



# AERODROME

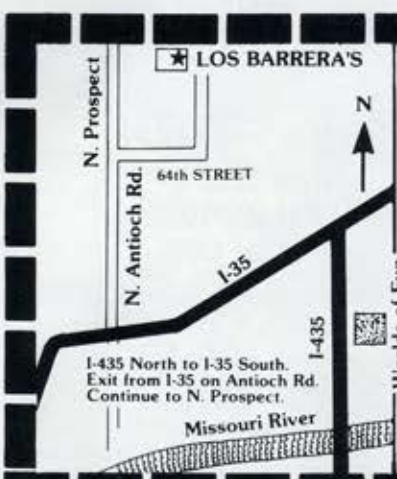
## A BRAND NEW AREA FOR '78

Worlds of Fun is bigger, higher, faster and more entertaining than ever before, due in part to the new three-acre Aerodrome area. And you won't need a compass or map to find this focal point of 1978 development. Aerodrome's featured attraction, the Barnstormer, cannot be overlooked from anywhere in the park. It's ten stories tall!

At Lucky Lindy's Lunch you can make your own luck by ordering a Solo Burger with Lindbergh cheese. Cockpit Coolers offers a refreshing selection of juices to revive your courage. In addition, the Red Baron, a children's biplane ride, finds an appropriate new home in the shadow of the Barnstormer.

After a five-year stint outdoors, DoLores Hadley's famous marionettes move into Aerodrome's Flying Circus to perform "Sawdust 'n' Sequins" during the day. As evening falls, the Flying Circus unleashes a sound and light spectacular to motivate your dancing feet—this time with no strings attached.

The Great Waldo Crankshaft's Prop Shop would make Orville and Wilbur proud to see the inventory of aeronautically-flavored souvenirs. Nothing's plain about these plane things.



At Worlds of Fun you're only 10 minutes from a world of delicious Mexican specialties at Los Barrera's.

- Home of the 60 oz. Margarita
- Only the Finest AAA Mixes Used
- Imported Beers Bohemian/Dosequis Carta Blance
- We Also Serve on Tap Tuborg & Falstaff



11 AM - 10 PM  
 MON. - SAT. Prospect Plaza next door to Woolco

**454-1510**

Kansas City's Most Authentic Mexican Restaurant  
**LOS BARRERA'S**  
 Restaurant & Lounge, 6467 N. Prospect

**10% DISCOUNT ON ALL FOOD WITH THIS COUPON**

EXCLUDING LIQUOR





# BARNSTORMER

## talk about a White Knuckle Ride

Barnstormer is Worlds of Fun's answer to those guests not selected as astronauts by NASA; but who still seek the excitement of height, speed and weightlessness that is out of this world!

Equipped with 12 aircraft styled after the biplanes flown by daredevil pilots of 50 years ago, the Barnstormer whisks today's daredevils on a three-minute, 10-story-high flight pattern circling the control tower at speeds that break the excitement barrier. Of course, what goes up, must come down. For these biplanes that means a breath-taking, 60-foot plunge towards the earth.

But don't let the authenticity of these four-passenger biplanes fool you. Up-to-date safety features including lap belts and door locks insure the flight is a round trip. (Parachutes are not supplied because they wouldn't open in time anyway!) Barnstormer is your opportunity to experience firsthand what the experts refer to as a white-knuckler. Happy landings!



### Tips to Enhance Your Visit

**CAR TROUBLE?** If you have mechanical difficulty with your vehicle, please raise the hood and contact a parking lot attendant. A courtesy vehicle will be by in a short time to offer assistance.

**NEED INFORMATION OR ASSISTANCE?** General information about Worlds of Fun or other area attractions may be obtained at the Guest Relations office at the main gate. As you explore Worlds of Fun, please don't hesitate to ask any Ambassador to assist you. They will be pleased to assist you.

**READMISSION TO WORLDS OF FUN:** If you wish to leave Worlds of Fun and return later the same day, have your hand stamped at the exit. You'll be readmitted at no extra charge. Be sure to retain your numbered parking receipt for free readmission to the parking lot.

people,  
pride & spirit



U.S. ENGINEERING CO.

SINCE 1893

Kansas City,  
Missouri

Loveland,  
Colorado

Reno,  
Nevada



## R.B. Jones Insurance

Professional insurance service.  
Property/Casualty/Marine/Surety/  
Employee Benefits/Life Insurance.

Commerce Tower, 911 Main Street  
Kansas City, Missouri  
816/391-1000



## LOOK DOWN

You are walking on our  
protective coating inside  
this great fun park.

Protects  
Preserves  
Beautifies  
Your Asphalt Pavement

Since 1961

Call us for information on  
driveways, parking lots and  
color tennis courts.

842-6066

McConnell, Inc.  
DBA Jennite Co.  
N.Kansas City, Mo. 64116

## ELLIOTT PAINTING CO.

COMMERCIAL & INDUSTRIAL



Serving All  
Greater KC &  
600 Mile  
Radius  
Surrounding

Member BBB

Member of Painting and Decorating  
Contractors of America

HERB ELLIOTT—President  
CHARLES WOODARD—V. Pres.

6504 Stadium Dr.  
923-3636

# It's Show Time



The variety  
of live show en-  
tertainment at  
Worlds of Fun  
makes it simply  
burst with  
pizzaz!

Young performers fill the park  
in every costume and setting  
imaginable.

In the Tivoli Music Hall you'll  
be "Razzle Dazzled" for 35 min-  
utes of fast-paced song and  
dance medleys from such

Broadway musicals as "Annie"  
and "Chicago."

The curtain rises to shiny red,  
toe-tapping pianos dancing with  
their partners to the tune of a  
1920's hit, "Jazz Me Blues,"  
before an early '60's malt shop  
becomes the setting for a 12-  
foot-tall juke box and such old  
favorites as "Da Doo Ron Ron."  
The nonsensical "Hallelujah  
Bananas" find Harpo, Groucho  
and Chico flying to Rio singing  
"South America, Take It





Away." A nine-foot banana slips center stage to reveal an a-peeling, fruit-adorned Carmen Miranda singing "Ai Yi Yi Yi Yi, I Like You Very Much" to six Groucho gauchos.

A heap of hobos pay tongue-in-cheek tribute to Herbert Hoover for their economic plight with "Money, Money, Money." And for the finale, new rock favorites "Stayin' Alive," "Living' In The City," and "New York, New York" fill the air. "Top hat and tails" performers end the show singing the title song, "Razzle Dazzle."

Try not to miss the light-hearted humor of the Moulin Rouge players and band who present "Croonin' A Tune About



June" in Europa's Moulin Rouge theatre. A comical magician uses slight-of-hand to tickle your funny bone, and a "By The Sea" cast prances in turn-of-the-century swimwear singing "I Love To Go Swimm' With Women." As you leave, the Moulin Rouge players remind you "You're Never Fully Dressed Without A Smile."

Stop for an entertaining breather at this year's new 15-minute Pygmy Playhouse production, "Oils Well That Ends Well." Nairobi Nigel and his crazy company of puppet friends are more creations of DoLores Hadley.

Skipper and Dolly dive into their sixth big, splashing season. The lively "Fins and Flippers" show, called "South Seas Spectacular," includes a new opening

act—the Kahula Wahines. The young dancers, dressed in colorful Polynesian costumes, are featured in a 15-minute dance review before the dolphin shenanigans begin. Then Skipper and Dolly are the stars; and their nine-foot-deep, 180,000-gallon pool becomes the stage for many mischievous tricks and antics.

The three-acre Aerodrome area is the address of the new Flying Circus puppet and dance pavilion.

"There are some people who are magical on stage and DoLores Hadley is six of those people," says Gary Noble, director of show productions. "She's not only an incredible artist in manufacturing her puppets and marionettes, but she exudes so much energy on stage. She is one of the best parts of the show."

The Flying Circus takes on a new personality in the evening. The dance hall provides just the right atmosphere to dance the night away.

This year Worlds of Fun goes way out on a limb to bring you a brand new show called "Cheep Thrills." Multi-colored macaws and cockatoos steal the stage with imaginative tricks as Weldon Middlebrooks hosts his show at the gypsy wagon in Scandinavia.



Don't forget to look through the park for some of our other attractions. The Firehouse Four Plus One is a footloose band of professionals performing ragtime and Dixieland tunes; and Dan'l Coon, Grrrtrude Gorilla and Sam Panda, the bigger-than-life, furry friends, roam the park greeting everyone. You might find them at any turn, so look out!

NOW AVAILABLE  
AT  
*Worlds of Fun*



**Bomb  
Pop**

America's  
favorite frozen  
treat. Looks like  
a rocket. Tastes  
like a million!

Mfd. by

**MERRITT FOODS  
COMPANY**

2840 Guinotte  
Kansas City, Missouri 64120

OPEN  
EVERY DAY

VISIT  
THE

"WORLD  
FAMOUS"  
Topeka  
ZOO

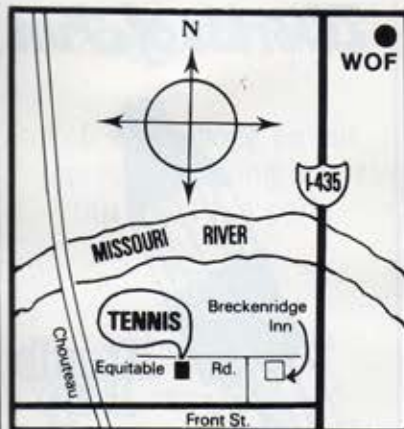
and Tropical Rain Forest  
in Gage Park, Topeka, Kansas  
Off I-70 at Gage Blvd. Exit

Phone  
913-272-5821

Present this ad for  
a free guide book



## SHERWOOD Indoor Tennis



**Lowest Rates  
In the Area**

**Special Rates  
For Out Of  
Town Guests**

**453-3358**



**It's fun to serve  
WORLDS OF FUN  
with his flavor fresh**

*Prepared Salads*

*"Potato Shred"  
Hash Browns*

*Fantasal Lettuce Products*

**DELL'S POTATO CO.  
240 OAK STREET  
KANSAS CITY, MO 64106**

**816-474-9510**

# KANSAS CITY

at a glance

Art, theatre, shopping and sports. Take an extra day or afternoon to visit the many historical, exciting and interesting spots Kansas City has to offer. Kansas City... City of Fountains... city of activity, excitement and fun. Known as one of the few liveable cities left, Kansas City has been named one of the top five clean-air cities nationwide.

Kansas City is justifiably called the City of Fountains. The J. C. Nichols Fountain, located on the Country Club Plaza, is among the



many fountains and beautiful attractions in this special area of Kansas City. Located just five miles from Downtown, the area covers 55 acres of shopping, dining and entertainment amidst Spanish architecture.

One of the nation's largest, privately funded, urban redevelopments is Crown Center. A five-story waterfall, hillside lobby, shopping and international cuisine help make up this city within a city.

Home of the championship Royals and the Kansas City Chiefs, the Harry S. Truman Sports Complex is recognized nationally as a unique concept in sporting facilities. The ultra-modern complex includes a 40,000-seat baseball stadium complete with a spectacular water display and giant scoreboard. Beside it is the 78,000-seat football stadium. Arrowhead, home of the Chiefs, is recognized

as the nation's finest football facility.

Kemper Arena, home of the Kansas City Kings, has won award recognition for its unusual architectural design. Its circular, pillarless construction provides unobstructed viewing from all 17,000 seats.

In nearby Independence, see the Truman Library housing nearly ten million papers, books and historical documents relating to some of America's most eventful years.

One of the finest art galleries in America, the Nelson Gallery of Art and Adkin's Museum, rises stately behind the beautiful statues in the Volker Park fountain. Enjoy a day viewing paintings, sculptures and artifacts in this educational Kansas City attraction.

A naturalistic adventure at Swope Park is the Kansas City Zoo. Exhibits include the African Veldt, Tropical Habitat, Great Cat Walk, Wolf Pack Woods and Gibbon Island. It's a colorful family outing in a remarkable landscape.

The Kansas City Museum of History and Science dedicates one entire floor to American Indian artifacts and history. The show in the Planetarium at the museum is presented weekends and on selected weekdays.

Each June through August, Broadway and big name shows come to Kansas City at Starlight Theatre. Located in beautiful Swope Park, Starlight provides outdoor theatre and musical entertainment under the summer stars.

For more information call the Convention & Visitors Bureau Fun Phone, 474-9600.



Photo: Convention & Visitors Bureau.



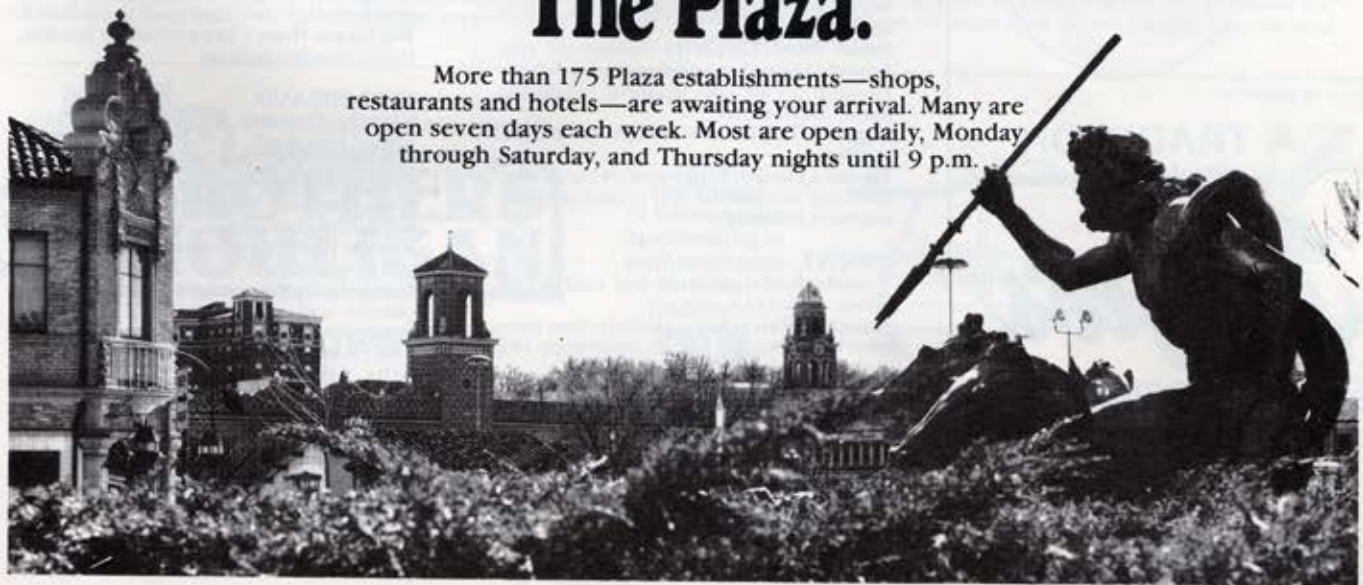


**IF YOU HAVEN'T READ US LATELY,  
YOU HAVEN'T READ US.**

**The Kansas City Star/Times**  
**THE NEWEST NEWS IN TOWN.**

**After you've experienced  
Worlds of Fun, experience one of the  
world's great shopping districts.  
The Plaza.**

More than 175 Plaza establishments—shops, restaurants and hotels—are awaiting your arrival. Many are open seven days each week. Most are open daily, Monday through Saturday, and Thursday nights until 9 p.m.







**WHEN YOU BUY OPIE  
YOU BUY  
NINE DECADES  
OF KNOWHOW!**

Janitorial Supplies  
Maintenance Chemicals  
Advance Floor Equipment

SERVING

ARROWHEAD  
WORLDS OF FUN  
ROYALS STADIUM

**PHONE: 816-842-1142**



**A TRADITION  
At Worlds of Fun**

**Boyle's®**

**FAMOUS CORNED BEEF**

**KANSAS CITY, MO 64106**

**GUIDE TO  
RESTAURANTS**

Worlds of Fun features many fine restaurants and refreshment centers offering a wide selection of internationally-themed menus.

NOTE: The best time to have lunch is before 11:15 AM or after 1:30 PM. We can provide you with the fastest service at these times.

**AMERICANA**

**Paddle Wheel Cafe**—enjoy your favorite sandwiches aboard our famous riverboat.

**Pizza Pier**—fresh pizza and salads.

**The Sub**—submarine sandwiches are the specialty here.

**Pretzel Bend**—soft pretzels, milk shakes, floats, fresh fruit.

**Cotton Candy Factory**—cotton candy and super size popcorn.

**Vittle Griddle**—breakfast and an all-American menu of western-style chili, king size hamburgers, cheeseburgers and corn on the cob.

**Custer's Last Stand**—corn dogs and snow cones.

**Aerodrome**

**Cockpit Coolers**—monster-size cold drinks, candy apples.

**Lucky Lindy's Lunch**—specialty hamburgers, french fries.

**Bicentennial Square**

**The Works**—tacos, Mexican subs, corn dogs, super shakes.

**EUROPA**

**Café Internationale**—chopped sirloin dinners, fish and chips, Italian-style spaghetti, salads and desserts in a sidewalk café atmosphere.

**Moulin Rouge**—popcorn and cold drinks.

**Lamar's Libations**—freshly squeezed lemonade.

**AFRICA**

**Congo Clearing**—features the famous, giant Kong Burger and deep-fried mushrooms.

**Big Jack's Jungle Juice**—monster-size cold drinks, candy apples.

**SCANDINAVIA**

**Nordic Nook**—a must stop for seafood lovers featuring deep-fried shrimp, fish and chips, and assorted sandwiches. Super steaks, too!

**Icicle**—monster-size cold drinks, candy apples.

**Smor Bord Cafeteria**—barbecued ribs, brisket sandwiches and dinners, fried chicken, corn on the cob, desserts, salads and more, much more!

**Bigger Dipper**—ice cream cones and sundaes.

**Daniel's Danish Deli**—peanut barrel, two-foot-long sandwiches and a variety of delicatessen favorites.

**ORIENT**

**Pagoda Soda**—monster-size cold drinks, candy apples.

**Rangoon Refresher**—chicken chow mein, an oriental hot dog kabob, onion rings, plus a variety of sandwich specialties.

**AROUND THE WORLD**

Popcorn wagons, ice cream carts and fresh juice carts are located throughout the park.

**BREAKFAST**

**The Vittle Griddle**—serves breakfast from opening until 11:30 AM each day.

**GUIDE TO  
SHOPPING**

You'll find everything from Worlds of Fun souvenirs to unique antique-type items. We suggest you shop in the early or mid-afternoon for best selection and assistance.

**AMERICANA**

**Cotton Blossom**—a gift boutique of unusual variety.

**Front Street Dry Goods and Electric Company**—youth, fad and fun gifts for everyone.

**Show Me Shop**—walk up for souvenir fun.

**Sharron's Yum Yum Tree**—sweet-tooth satisfiers here.

**Brim's n Bonnets**—for fashion or shade, see brims for hats.

**Which-A-Way Station**—punch-a-ball inflatable fun.

**Balloons**—varying shapes and sizes.

**Livery Stable**—outdoor shopping bazaar.

**Clark's Trading Post**—souvenirs and gift variety.

**WOF Post Office**—gifts for the young at heart and young of age.

**Spittin' Image**—of fashioned photos of you.

**Snap Shot Shop**—film, flash cubes, souvenir slides and free camera loans. As you exit, leave your film at the camera shop for processing.

**Aerodrome**

**The Great Waldo Crankshaft's Prop Shop**—a super selection of mobiles, kites, chimes and fun gifts.

**Bicentennial Square**

**Game Street U.S.A.**—test your skill and win a prize.

**New Funtier**—electronic fun at its super-charged best.

**Uncle Sam's Skeeball Hall**—48 alleys of bowling fun.

**Calamity Games**—test your skill and win a prize.

**EUROPA**

**La Petite Toy Shoppe**—toys and stuffed animals for the younger guests.

**AFRICA**

**Diamond Mine**—rings, bangles, beads and jewels from the mine.

**Bwana's Bargains**—stuffed toys of all sizes for all sizes of guests.

**Tangiers Headgear**—hunt or safari, headgear here.

**Big Game Hunt**—bag a big one at this electronic shooting gallery.

**SCANDINAVIA**

**Victrix Cannon Range**—ahoy there, matey! Fire at will.

**Norsemen's Niceties**—souvenirs and gifts with the Scandinavian flair.

**Copenhagen Nogginvear**—fashion or shade hats of all types.

**Fjord's Pharmacy**—tobacco, medications and sundries.

**Norma's Niche**—unique and hard-to-find candles and accessories including color-clipping facilities for the do-it-yourselfers.

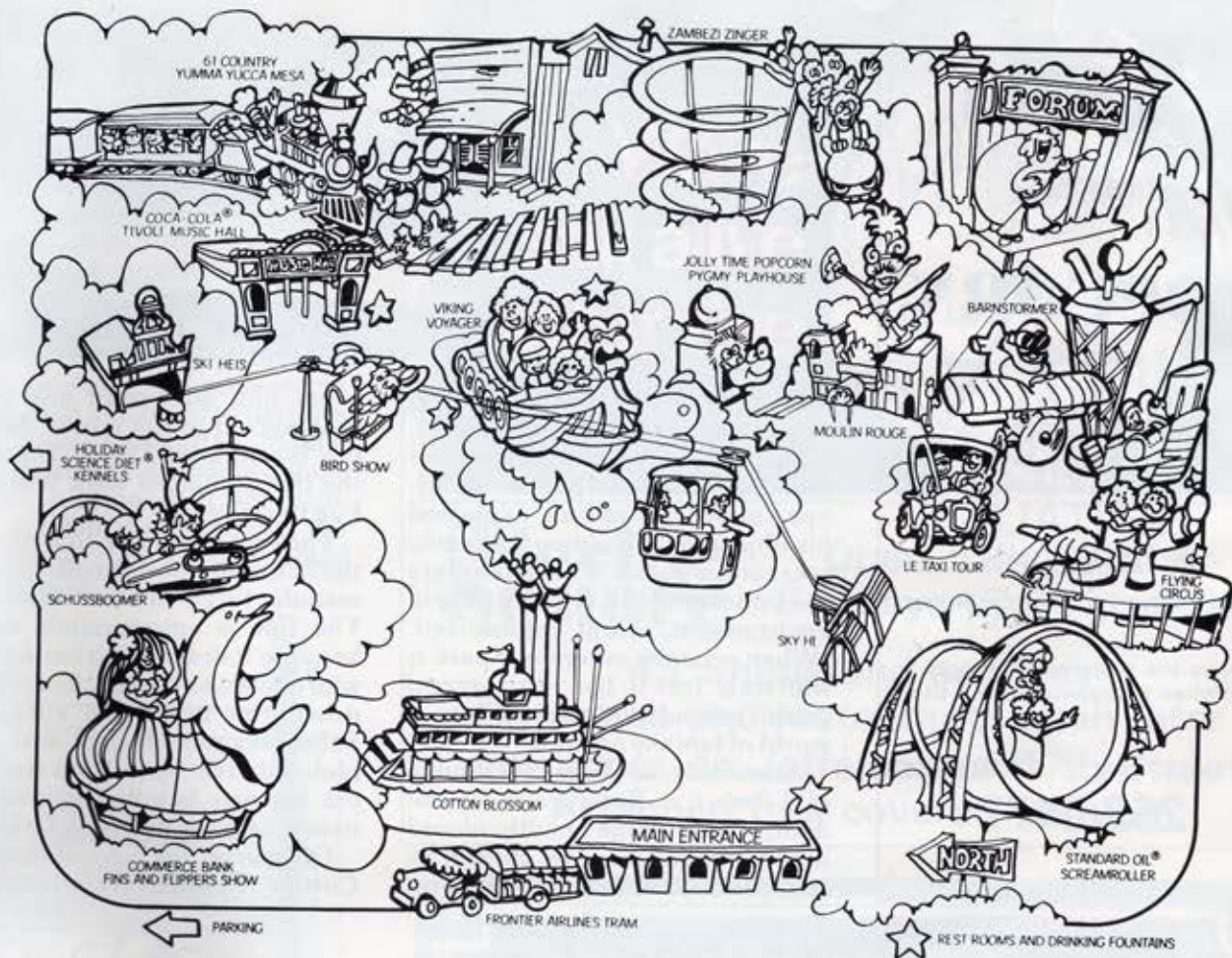
**The Glass Menagerie**—glass art.

**Arctic Arcade**—fun and games the electronic way.

**ORIENT**

**Rickshaw Richard's Exporters Ltd.**—a world-wide shopping bazaar with many mysteries from the East.





## OUR CORPORATE PARTNERS

### FRONTIER AIRLINES TRAMS:

A ride to and from your car is brought to you by Frontier Airlines. Discover the new Frontier. Fly the official airline of Worlds of Fun on your next visit to Dallas or Denver.

### JOLLY TIME POPCORN PYGMY PLAYHOUSE:

Worlds of Fun proudly serves Jolly Time, the world's most popular popcorn. Jolly Time presents the Pygmy Playhouse puppet show in the African section.

### COCA COLA TIVOLI MUSIC HALL:

Last year guests drank over 2.2 million servings of Coke, Sprite, Fanta Root Beer and Tab. Coke adds life to your visit to Worlds of Fun!

### STANDARD OIL SCREAMROLLER:

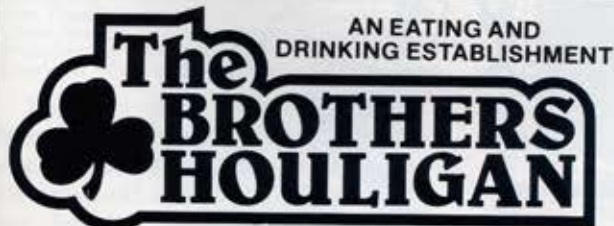
The Amoco Sports Club invites you to experience Kansas City's most exciting sport—Screamrolling! See your friendly Standard Oil dealer. Their job is you.

### COMMERCE BANK FINS & FLIPPERS SHOW:

Skipper and Dolly, that famous dolphin duo, are brought to you by Commerce Bank, the bank that asks, "What can we do for you?"

### HOLIDAY SCIENCE DIET KENNELS:

Our official dog and cat food provides free lodging and meals for your pets. Purchase Science Diet at pet shops, kennels and grooming parlors.

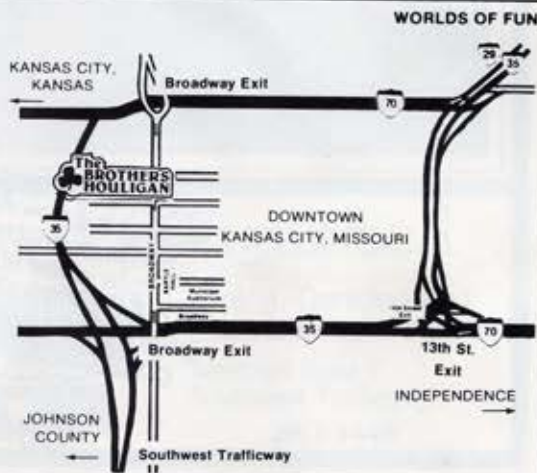


900 BROADWAY  
474-5505

Serving from  
10:30 A.M. to 10:00 P.M.  
Monday through Thursday  
10:30 A.M. to Midnight  
Friday & Saturday

a new  
restaurant  
in Kansas City  
specializing in  
authentic Irish  
fare and  
traditional  
favorites,  
including  
homemade  
Irish herbed  
bread and  
Irish stew.

We Accept  
All Major Credit Cards





# L&L

SUPPLY & EQUIPMENT  
COMPANY

## POPCORN

EQUIPMENT

### SALES SERVICE RENTALS

Everything For Concessions

Drive-Ins • Stores • Schools  
Churches • Organizations • Etc.

701 Southwest Blvd. K.C., Kan.

## 262-0477



## HOW IT ALL BEGAN



At the official groundbreaking ceremonies in November of 1971, Lamar Hunt, board chairman of Mid-America Enterprises—developer of Worlds of Fun, explained his objective in building the family recreation park. "This site offers the opportunity to create a unique environment," Hunt emphasized. "When a family enters our park it will truly feel it has left the real world behind and walked into a world of fantasy and fun."

According to Jack Steadman, Mid-America Enterprises president, "The large multi-colored ascension balloon was chosen as the park's symbol because it repre-

sents fun, adventure and travel reminiscent of the movie 'Around the World in 80 Days.' These are the things that we want Worlds of Fun to represent."

The first attraction to arrive was the Schussboomer, a roller coaster manufactured in West Germany. The ride is appropriately named because it describes a daring skier who travels extremely fast straight down the mountain side. The Schussboomer began and completed its trip by rail, but the longest leg was handled by ship between Belgium and New Orleans.

Of course, the relocation of the Cotton Blossom riverboat, the

**CURSE YOU, RED BARON!**  
I'LL MEET YOU AT THE  
**WORLDS OF FUN AERODROME**  
AND WE'LL SEE WHO'S BEST!



Snoopy—the Flying Ace of the Airways—will be at the new Aerodrome! Come see him outmaneuver the Red Baron! And while you're enjoying his antics, enjoy a Dolly Madison Zinger in one of three great flavors—devils food with chocolate, gold cake with vanilla or raspberry with coconut, all with creme centers!

**Dolly Madison**  
Neat-to-Eat Treats







# Peaches®

The largest selection of records and tapes anywhere . . . in a totally unique music environment.

## RECORDS AND TAPES

**STORE HOURS**  
 Mon. - Thurs. 10 A.M. - 12 A.M.  
 Fri. - Sat. 10 A.M. - 1 A.M.  
 Sunday - 12 P.M. - 11 P.M.

Accepting American Express • VISA • Master Charge

75th & Metcalf  
 Overland Park, Kansas  
 262-6665

## ENJOY YOUR DAY AT WORLDS OF FUN

Best Wishes — Ken Jenkins Sr., Ken Jenkins Jr., Doc Jenkins

WE'RE ON CALL  
 24 HOURS A DAY—  
 7 DAYS A WEEK  
 TO SERVE YOU  
 THE BEST WE CAN



1137 SWIFT  
 N.K.C., Mo. 64116  
 471-3785—DAYS  
 741-2875—NITE  
 454-1784—NITE  
 452-4070—NITE

COMPLETE MACHINE SHOP & WELDING FACILITIES TO DO ANY KIND OF JOB FOR INDUSTRIAL, COMMERCIAL, FARMING & INDIVIDUAL NEEDS



*Enjoy the official Worlds of Fun Pop Corn, at home too!*

*Paul Splitterff does.*



The ace Royals hurler says: "I'm a real pop corn fan. I've tried 'em all. My friends at JOLLY TIME showed me what good pop corn really is. Next time, try the extraordinary taste of JOLLY TIME® Pop Corn, and see for yourself."

USE THIS  
 MONEY SAVING  
 COUPON AT YOUR  
 FAVORITE  
 GROCERS

**THE WORLD'S BEST KNOWN POP CORN**

**10¢ OFF** Jolly Time

TO DEALER: We will reimburse you 10¢ plus 5¢ for handling this coupon if used in accordance with our offer. Coupon good only on Jolly Time Pop Corn. Other use is illegal. Invoice proving purchase on sufficient stock to cover coupons presented for redemption must be shown on request. Coupon void if taxed, prohibited or otherwise restricted by law.

Customer pays any sales tax. Cash value 1/20 cent.  
 Mail coupon to:  
 Jolly Time Pop Corn, P.O. Box 178, Sioux City, Iowa 51102

**10¢**





**Minsky's**  
PIZZA

**“Luscious”**  
is the word for

**Minsky's**  
PIZZA

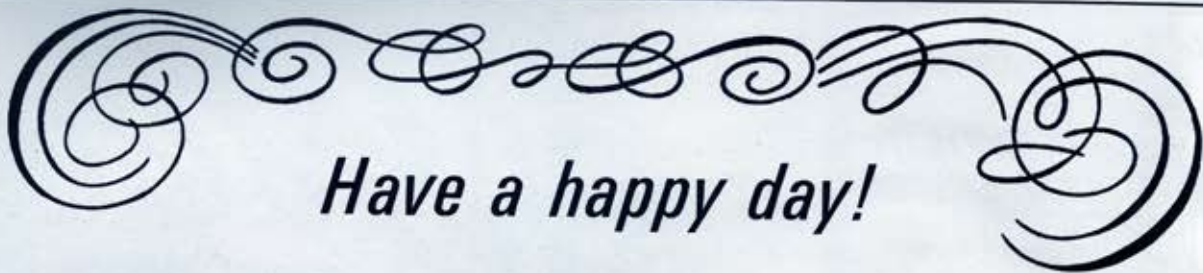
**Eat It In  
or  
Take It Out**

Easy to reach from Worlds of Fun,  
Royal's Stadium, or Truman Library.  
Just south of I-70 at

4362 S. Noland Road  
373-9500

10630 Metcalf  
341-9292

5105 Main  
561-5100



*Have a happy day!*

# Granny Flick

**Pastries and Hearth Rolls**

*The Kansas City Baking Company, Inc.*



# Welcome

come fill two plates  
**ENJOY DINING  
IN THE LARGEST  
AND FINEST  
BUFFET IN THE  
U.S.A.**

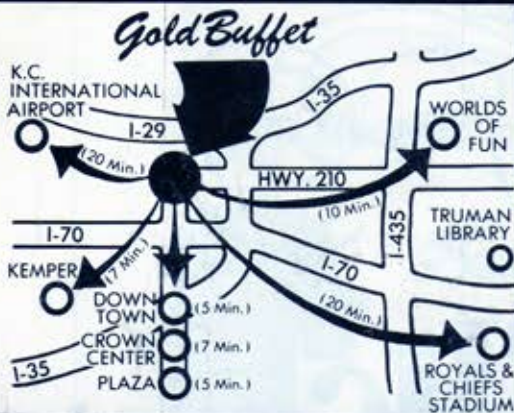


**BUFFET EVERY NOON  
AND NITE, WITH 51  
SALADS, 30 HOT  
DISHS AND 7 DESSERTS**

- SHRIMP EVERY THURS. & FRI. NITES
- FAMILIES • PRIVATE PARTIES

**NO  
WAITING  
ALL YOU  
CAN EAT**

**NO RESERVATIONS  
COME AS YOU ARE**



48 Bowling Lanes  
15 Pool Tables  
Mini Golf ...  
Adjacent to ...  
The 21 Banquet  
Rooms at ...

## Gold BUFFET

503 E. 18th Ave.  
North K.C. MO

816-221-4651

ALSO WINTERSET, IA.

A family Buffet with  
Free Gold Rings to the kids.



PLUS OUR

# Celebrity ROOM

MONTHLY LAS VEGAS SHOWS



GEORGE GOBEL ROWAN & MARTIN JERRY VAN DYKE RIPLEY RUSSELL TERESA BREWER JEANNIE C. RILEY MEL TILLIS FOSTER BROOKS RED SKELTON JIMMY DEAN

