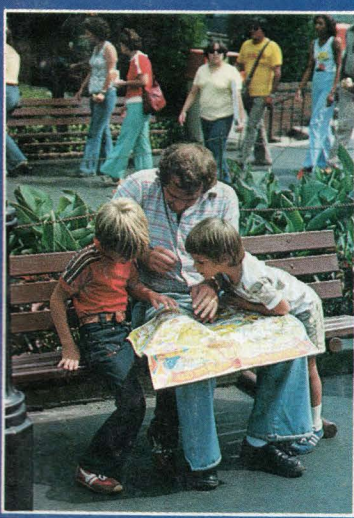
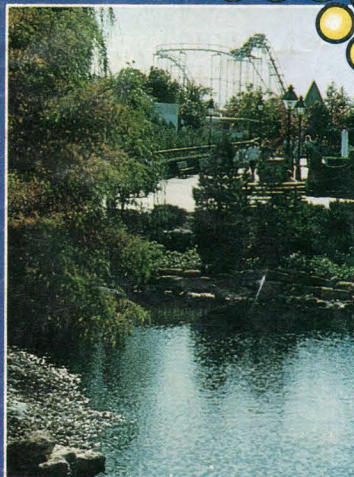


79 GREAT TIMES



THE OFFICIAL
MAGAZINE OF

Worlds of Fun
Kansas City, Missouri



Welcome to Worlds of Fun !

You're about to enter a 153-acre, magical land with over 95 rides, restaurants, shops and attractions especially designed for your enjoyment and entertainment. And, waiting too, are 1,500 Ambassadors who wish to make this day the most memorable and enjoyable of your year.

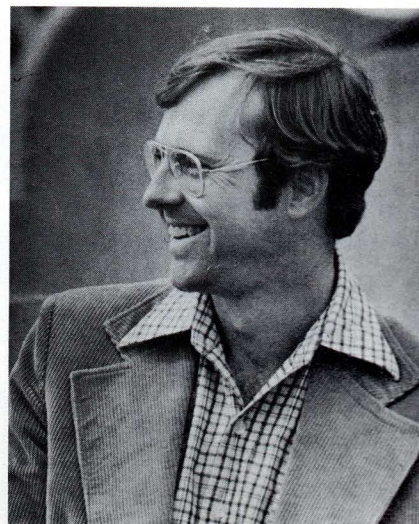
To assist you in your Worlds of Fun adventure, we have provided the *Great Times* magazine you are reading. It contains the necessary information you will need to enjoy Worlds of Fun to the fullest. If you find, however, you have questions that aren't answered in *Great Times*, please ask any Ambassador for assistance.

Worlds of Fun is made for your great times. We, therefore, hope you'll keep this copy of *Great Times* magazine as a reminder of the ones you have today.

Thanks for letting us entertain you. We hope you'll give us the opportunity to do so again real soon.

Sincerely,

Lee Derrough
Vice President and
General Manager



CONTENTS:

DISCOVERING WORLDS OF FUN What to do...Where to go	4
BITS & PIECES The Shows...The Rides...The People	8
IT'S SHOW TIME Live show entertainment at its finest	10
VETERAN PUMPER IN PROUD RETIREMENT Worlds of Fun's official parade entry	12
FACING A STITCHERY BLITZ It takes miles of material and lots of imagination	13
COCKATOO NEWS It's a "Cheep Thrills" bird show rated "Gee"	14
LANDSCAPE MAGIC Worlds of Fun—A 153-acre perennial plant haven	14
AHOY LANDLUBBERS Two Hollywood movie show boats find a land-locked home port at Worlds of Fun	15
SHOPPING & SNACKING AT WORLDS OF FUN Everything from souvenir hats to internationally-themed meals	16-17
WORLDS OF FUN EXPANSION From 1973 to the present.....	18
FUEL FOR FUN Ambassadors eager to please	20
SALT WATER FUN Skipper and Dolly—Seventh season of dolphin shenanigans	22
IT'S A KC EXPERIENCE All about Worlds of Fun's Home Town	23
CORPORATE PARTNERS	27
KC AREA MOTELS/HOTELS/RESTAURANTS	28



COVER: Worlds of Fun's seventh season features additions in each themed area of the park. Four new rides, a new show and other facilities have been added to Worlds of Fun's entertainment package for 1979.

GENERAL OFFICES: 4545 Worlds of Fun Avenue,
Kansas City, Missouri 64161 (I-435 at Exit 54)
Phone (816) 454-4545 Established 1973

Great Times is a feature magazine published annually by Worlds of Fun and is distributed free to each vehicle arriving at Worlds of Fun. All rights reserved. Reprint of material only upon written approval of the copyright owner-Worlds of Fun. Advertising rates upon request.

Our clients have more fun.

We're proud to be the advertising agency for Worlds of Fun. We have many clients, in all kinds of different businesses, but one thing they all agree on is advertising is more fun when it works.

BB

Bernstein/Rein & Boasberg
Advertising 756-0640

R.B. Jones has just become part of the world's second largest insurance broker.

Our name has changed and our new affiliation will enable us to offer you additional facilities, expertise and the strength of Alexander & Alexander worldwide.

Alexander & Alexander The Allies

R.B. Jones Corporation, Commerce Tower, Kansas City, Missouri is a wholly owned subsidiary of Alexander and Alexander.

Discovering WORLDS OF FUN

What to do...Where to go...
Things to see...
All the things to help make
your Worlds of Fun visit
a really great time!

PARKING:

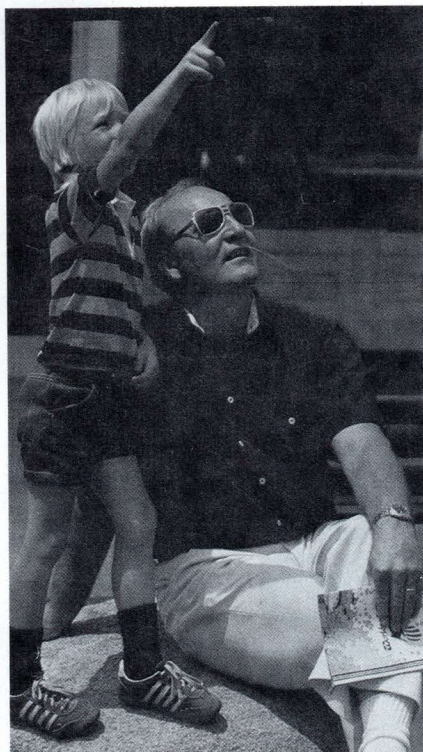
Great Times is included with your parking fee. Please note the number and area where you park so you will be able to locate your car after your visit. If you desire to leave the parking lot and return the same day, present your numbered parking ticket for free readmission. Enjoy the convenience of a Frontier tram which will transport you directly from your parking area to the main entrance.

DRESS:

While the dress at Worlds of Fun is always casual, proper attire, which includes shirts and shoes, is required.

HOLIDAY SCIENCE DIET KENNELS:

The European plan is available for your vacationing dog or cat at the air-conditioned kennel (tram stop #1). Free lodging and meals for your pets are provided by Holiday Science Diet, and an attendant is on duty at all times. Take advantage of this fine facility. Pets are **not** permitted in the park.



ADMISSION:

The best entertainment buy anywhere. A Passport ticket includes main gate admission and as many rides, shows, attractions and special events as you can see and do.

ONE-DAY PASSPORT \$9.50 plus tax (adult or child) Children under 3 free.

TWO-DAY PASSPORT \$13.50 plus tax (adult or child) Children under 3 free.

If you have a weekend or any two days to visit Worlds of Fun, our two-day ticket is made for you! Tickets are non-transferrable, date stamped and must be used on consecutive days. During weekend operations, two-day tickets are sold only when Worlds of Fun will be open the following day.

SEASON PASSPORT \$29.95 (tax included)

Unlimited use season passes are available at the season pass booth at the main entrance. Enjoy every day of your choice at Worlds of Fun including concerts and special events with your personalized season passport.

GROUP RATES:

Special rates are available to groups of 25 or more. For further information, call (816) 454-4545, ext. 222; or write Worlds of Fun, Group Sales, 4545 Worlds of Fun Avenue, Kansas City, MO 64161.



GUEST RELATIONS:

General information or assistance that other Ambassadors or Park Rangers are unable to provide is available at Guest Relations. Feel free to stop by the office located on the S. S. Henrietta at the main entrance. These helpful Ambassadors can give directions, cash checks, make hotel reservations and provide extra copies of the

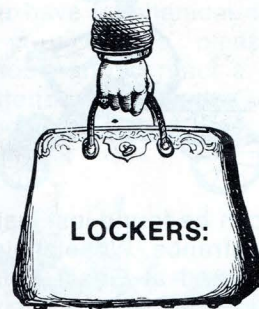
day's show schedule. In addition, they will do their very best to answer any questions you might have.



CREDIT CARDS:

We honor American Express, Visa and Master Charge at the ticket booths and most shops through-

out the park. In order to provide you with prompt service, we cannot accept credit cards at restaurants and food stands.



Lockers near the main entrance may be used to store small items you don't wish to carry with you. Regulations require that no packages, bottles, cans or coolers be taken into Worlds of Fun. We ask that you leave these items on your bus or in your car. *continued*



Waid's

The Family Restaurant

Breakfast, Lunch and Dinner served in pleasant, family surroundings. There's a special menu for the children and free balloons. We always serve our famous cheese soup and fresh, hot rolls. In the summer there's Fresh Strawberry Cream Pie

Thirteen convenient locations including Topeka.

**this coupon is good for a
FREE DESSERT***

***With each meal check over \$2⁰⁰**

Forum-mmm
CAFETERIAS

Coupon good through
December 1, 1979

Kansas City, Missouri
Antioch Shopping Center
Junction of Vivion and
Antioch Road
816-454-5133

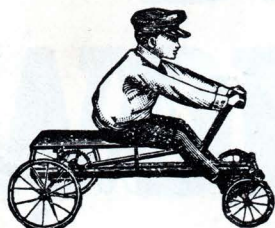
Kansas City, Kansas
Indian Springs Shopping Center
West of I-635 on State Avenue
913-287-5335

Overland Park, Kansas
Oak Park Shopping Center
Junction of Quivira Road
and 95th Street
913-492-8381

Independence, Missouri
Independence Center
Junction of I-70 and Highway 291
816-795-8855

STROLLERS AND WHEELCHAIRS:

A limited supply of free strollers for small children are available on a first-come, first-served basis.



Most can be found just inside the main entrance. Wheelchairs may be obtained at Guest Relations. We take reservations for wheelchairs only.

MAPS:

Colorful, poster-size maps will guide you through each "world," and they make great souvenirs. You can purchase them at map carts at the main entrance and at most shops.



SHOW TIMES:

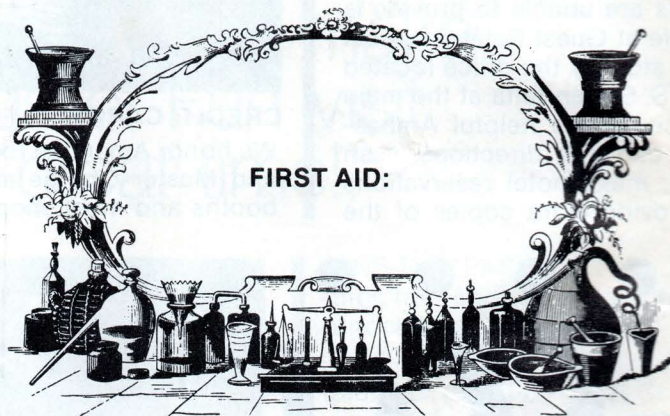
Nearly four hours of different live shows are performed throughout the day. Each day's show schedule is published in a handout sheet distributed with this program (extra copies at Guest Relations) and on the large map and show displays throughout the park.



CAMERA AND FILM:

If you forgot yours, free cameras are available for your use at the camera shop. The Snap Shot

Shop is located in the Americana section near the main entrance.



FIRST AID:

The First Aid station is located in the Scandinavian section near the Schussboomer roller coaster. Any of our Ambassadors or park rangers will direct you. Our First

Aid staff is on duty at all times; however, they cannot dispense medication. Medication such as aspirin may be purchased at Fjord's Pharmacy near First Aid.

HOTEL RESERVATIONS:

Worlds of Fun provides a free reservation service at Guest Relations at the main entrance. Hotels and motels located throughout the area are included in the system. Please make your reservations as soon after you arrive at the park as possible.

RAIN CHECKS:

Worlds of Fun remains open under most weather conditions. Certain rides, however, must close briefly during inclement weather for the safety of our guests. Because there is a variety of shows, rides and other attractions that are unaffected by the weather, we do not issue rain checks or refunds.



PUBLIC TELEPHONES:

Public telephones are located near most restrooms and at the park entrances.

PAGING:

Worlds of Fun does not have facilities for personal paging. We cannot page for lost children. Therefore, we suggest you plan a specific time and place inside the park for your family to meet prior to your departure.

HEIGHT RESTRICTIONS:

For your safety, height restrictions (some maximums, some minimums) are posted on some rides. If you're the right size, you can ride as often as you like. If not, there are other rides for you to enjoy. Children must be accompanied by an adult on certain rides, too!

RIDE QUEUE LINES:

Line jumping is discourteous and strictly prohibited. Violators are subject to dismissal from the park.

MEALS:

Plan meals a bit earlier or later than usual. You'll find fewer people at our restaurants and snack stands. See the shows in the early afternoon and save the rides until later. They're even more fun after dark!



LOST CHILDREN:

Small children separated from their parents are taken to the Lost Parents Caboose near the Union Depot train station. Ambassadors are on duty to entertain the children until they are reunited with their family.

RESTROOMS/DRINKING FOUNTAINS:

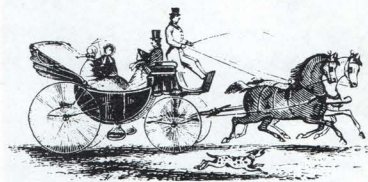
You'll find restrooms and drinking fountains in each section of the park. Ask any Ambassador for directions.

LOST AND FOUND:

Claim or report lost articles at the security booth at either entrance any time during operating hours.

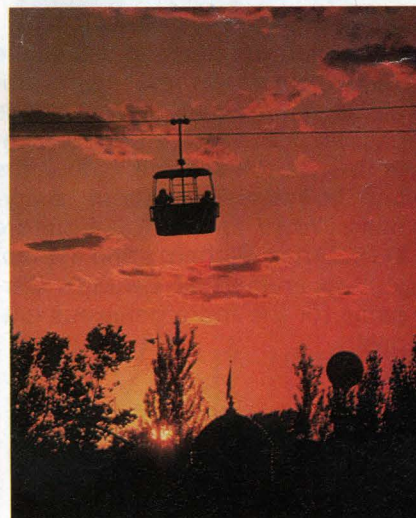
CAR TROUBLE:

If you have mechanical difficulty with your vehicle, please raise the hood and contact a parking lot attendant. A courtesy vehicle will be by in a short time to offer assistance.



READMISSION TO WORLDS OF FUN:

If you wish to leave Worlds of Fun and return later the same day, have your hand stamped at the exit, and you'll be readmitted at no extra charge. Retain your numbered parking receipt for free readmission to the parking lot.



When your day at Worlds of Fun comes to an end, the Frontier trams provide convenient transportation from the main entrance to your car. During peak exiting hours, we suggest you consider walking from the park to the parking lot. A walkway from the Scandinavian exit has been provided for this purpose.

BITS & PIECES

The shows, the rides,
the people...all make
Worlds of Fun...
fun for you !

Gifts Galore

Brave all the rides and see all the shows, but don't forget all the fabulous shops and game booths packed with more than 5,000 varieties of gifts, toys, souvenirs and jewelry—just about everything. You'll find wicker furniture at Rickshaw Richard's and 4½-foot stuffed animals at Bwana's Bargains for the more generous gift-giver.

Riding the Rapids

The Viking Voyager flume ride continues to be the most popular Worlds of Fun attraction. In 1978 the Voyager took guests on 1,559,341 water excursions while the Zambezi Zinger roller coaster placed second in popularity by offering guests 1,383,510 rides

through the jungles of Africa. The Screameroller ranked third most popular after taking guests on 1,230,346 double-upside-down, corkscrew spins.

Since opening in 1973, Worlds of Fun has given a total of 87,184,109 rides which is an average of 13 rides per guest.



From Around the World

The majority of the 1.3 million guests who pass through the Worlds of Fun turnstiles each year come from Missouri, Kansas, Nebraska, Iowa and Oklahoma. But each year guests visit from all 50 states and over 65 foreign countries. If you stroll past the World Board in Europa, you'll see a list of some 1979 park guests and the states and foreign countries they call home.

Were You There ?

More than 130 talents and 400 concerts have been presented on 190 days at the Worlds of Fun Forum Amphitheatre since its

opening in June 1974. They include Captain & Tennille; Ray Charles; Roy Clark; Bill Cosby; Pablo Cruise; England Dan & John Ford Coley; Marilyn McCoo & Billy Davis, Jr; Mac Davis; Head East; Firefall; Crystal Gayle; Gabe Kaplan; The Lettermen; Ronnie Milsap; Anne Murray; Rick Nelson; The Oak Ridge Boys; Kenny Rogers; Sha Na Na; The Spinners; Frankie Valli; Bobby Vinton; and Don Williams.

Want to be in Pictures ?

Step back into the early 1900's or the Civil War days, for that matter, and preserve your Worlds of Fun great times in a photo of yourself and your friends at the Spittin' Image photo shop. Follow your map to two locations in Americana. On the upper deck of the Cotton Blossom or adjacent to the Post Office you can slip into one of 15 old-time costumes. Now, "Hold it!"

We Knew They Were Hungry...

Question: What eats 225,000 ice cream cones and comes back for more? **Answer:** Last year's guests. And that's not all they consumed. The list includes over 600,000 hamburgers; 750,000 orders of french fries; 97,000 hot pretzels; 35,000 ears of corn; 225,000 gallons of soft drinks; 15 tons of chicken; 7 tons of barbeque ribs

and brisket; and 10,000 lbs. of ham.

You'll find these and over 250 delightful delectables at various eateries throughout the park.

Changing Seasons at Worlds of Fun



A Visit in Springtime

Burst out of those winter blues with a trip to Worlds of Fun in April or May. The park is open on Saturdays and Sundays; and you'll beat the crowds, beat the heat, get a sneak-a-peek of the all-new additions, smell the blooming flowers and enjoy a unique slate of springtime events.

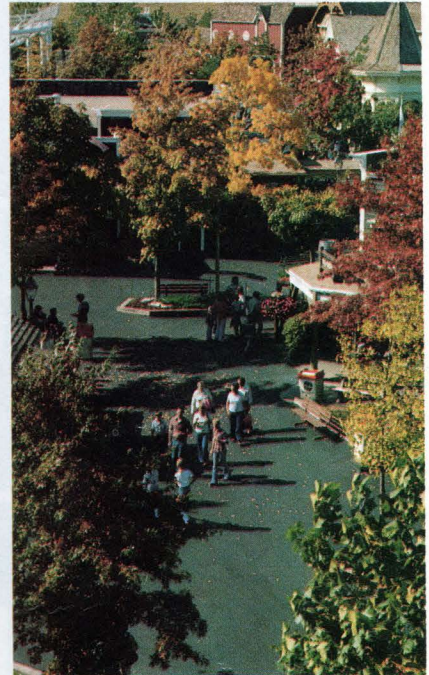
Band and choir festivals with a seven-year tradition include participants from eleven midwestern states. High school bands perform open-air concerts in the streets. Girl Scout and Camp Fire Girl, 4-H and school events add to the special springtime atmosphere.



A Visit in Summer

Summer is the traditional time of year to visit Worlds of Fun. In

fact, two-thirds of the park's guests each year visit during June, July and August. It's hard to imagine a better time of the year to visit, but you'll find something very special about springtime, nighttime and autumn at Worlds of Fun.



A Visit in Autumn

During the fall, you'll notice smaller crowds and the beauty of a Missouri autumn. As leaves turn to vibrant hues of gold and red, exciting fall festivals add to the enjoyment of your end-of-season visit.

A Visit in the Evening

A magical paradise awaits guests who discover Worlds of Fun at night. The aura of romance and adventure will suspend you in a fairy tale world of twinkling lights, cool breezes and delightful surprises! Experience it just once. You'll understand.



IT'S IT'S SHOW SHOW TIME TIVOLI



If Worlds of Fun's chilling rides leave you weary, don't fret. Four great hours and a variety of live show entertainment are left.

Take a seat in one of two air-conditioned theatres, The Tivoli Music Hall and Moulin Rouge, for toe-tapping Broadway-style and cabaret shows. Singers and dancers are performing new songs and new steps in all-new 1979 shows. Talented young performers from Kansas City and as far away as Atlanta and Denver "give their all" while you munch on popcorn and sip a cool drink.

The Coca-Cola Tivoli Music Hall

has something for everybody in "Gotta Dance," a 35-minute variety production. The opening of the show portrays a story reminiscent of the era of great movie musicals. A small-town country girl boards the train for Broadway, singing and looking for the "City Lights," as the hometown folks send her on her way with "All Aboard for Broadway." The train pulls into Times Square, and Mr. Broadway sweeps the country bumpkin off her feet—around the stage in the tradition of Fred Astaire and Ginger Rogers.

With a quick scene change, it's all happening at the "Y.M.C.A.," or so it seems, as the cast tells the story while sporting jogging togs. The tempo changes with the steel guitar sound of contemporary country, and a group of lovely country gals sing some recent top hits such as "Blue Bayou," "Here You Come Again" and "Don't It Make My Brown Eyes Blue." At a gospel celebration, a musical debate about the relative merits of gambling features the pros ("Go



Down Gamblin' ") and the cons ("You Can't Win) until "Everybody Rejoices" at the resolution.

The Tivoli finale brings you back to the late forties at a New York nightclub. The big band strains of "Sir Duke" and "Opus One" fill the air and transcend the years. A light spectacular splashes the audience while current disco hits fill the music hall as the cast reminds you that "All You Need Is Music."

The Moulin Rouge

has "Hello Great Times," featuring fast music and schtick in a twenty-minute production. Six performers bid the audience to "Wake Up and Live" during the opening overture which turns into a raid by the men in blue. Theatre proprietress, Miss Towanda Twiddly, is determined to clean up the bawdy vaudevillian atmosphere by turning the Moulin Rouge into a prominent opera house. The cast refuses to turn in their slapsticks, however, and the argument continues in both song and prose. Finally, Officer O'Reilly relents, and with a Gaelic brogue announces, "There's a Little Bit of Good In Everyone." With the law on their side now, the cast changes Miss Twiddly's viewpoint and all join in to sing a stirring rendition of "Hey There Good Times, Here I Am."

The Tivoli and Moulin Rouge shows are the most elaborate productions for the staff to prepare. Even before the 1978 shows had run their course, scripts were being written and scenery designed for the '79 season.

The Tivoli Music Hall produc-



tion with a cast of 16, a 14-piece orchestra and a 12-member stage crew will offer Worlds of Fun guests over 600 shows this year. The Moulin Rouge theatre has a cast of six, three musicians and a two-member stage crew. Over 600 performances will be offered during the season.

ON STAGE

Where does all the talent come from? Gary Noble, director of show productions, tells the story. According to Noble, about 700 performing hopefuls audition each year for roles on the Worlds of Fun stages that come alive over 130 days each year. Thirty to forty-five high school and college-age youths are selected from an extensive audition tour throughout



the Midwest. This year some performers come from as far as Atlanta and Denver.

"Our young people perform for a variety of interests," Noble says. "For some it may represent a step to stardom—toward becoming a professional performer. For many others it represents a very entertaining summer job spent with people of similar interests who also love music and performing."

King Henry's Feast



Kansas City's

FUN

Dinner Theatre

811 W 39th

For Reservations 531-5031



QUALITY FOOD SINCE 1883
Try many of our products at Worlds of Fun



JB'S BIG BOY
Family Restaurants

We proudly feature Oscar Mayer bacon, sausage & hams.

- Shawnee, Kansas
- Atchison, Kansas
- Leavenworth, Kansas
- Ottawa, Kansas
- Lawrence, Kansas
- Salina, Kansas
- Pittsburg, Kansas (opening soon)
- Omaha, Nebraska
West Center
Farnam
Bellview

Present this ad at any of the above restaurants and with the purchase of 1 Big Boy, get 1 free.

LOOK DOWN

You are walking on our protective coating inside this great fun park.

Protects
Preserves
Beautifies
Your Asphalt Pavement

Since 1961

Call us for information on driveways, parking lots and color tennis courts.

842-6066

McConnell & Assoc. Corp.
N. Kansas City, Mo. 64116

Veteran Pumper in Proud Retirement

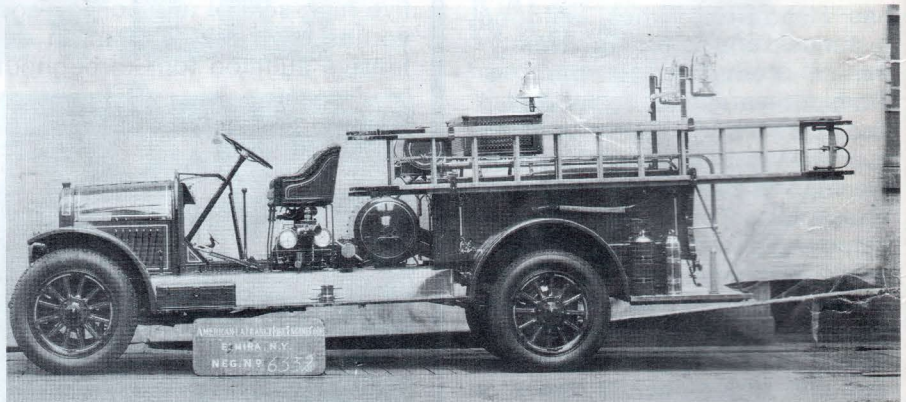
A fascinating vehicle with a name as long as its history proudly sits in Firehouse #1 in Bicentennial Square—the American LaFrance Brockway Torpedo Triple Combination Pumper fire engine. The 54-year-old relic recently made its way from rust to treasure with 12 coats of bright red paint, gold pinstriping and a good deal of affectionate tinkering by the Worlds of Fun maintenance crews.

Originally equipped with 1,000 feet of hose, the fire engine sported a 40-gallon chemical tank,

small fire extinguishers and kerosene lanterns which hung at the rear of the fire engine behind the chrome bell. In the old days it pumped 335 gallons of water a minute from fire hydrants, ponds or rivers.

The pumper was manufactured in New York and shipped to Kansas City in 1925. It was purchased by Valley Falls, Kansas, in 1926. The Edgerton community in southwestern Johnson County, Kansas, used the fire engine before it was purchased by Jerry Smith, a noted area antique collector, for \$300. It arrived at Worlds of Fun with threadbare flat tires and its hose compartment filled with original, but well-used, parts and accessories.

Now that the pumper's working days are over, it has become the official Worlds of Fun vehicle for parades and events throughout Kansas City.



The "Torpedo" was photographed at the American-LaFrance factory in Elmira, New York, in 1925 before it was shipped to Valley Falls, Kansas, for active duty.

Now on display at Worlds of Fun's Firehouse #1, the "Torpedo" is shown here with firefighters Sam Panda, Dan'l Coon and Grrrtrude Gorilla after receiving a total restoration from the park's maintenance department in 1977.



FUN TO EAT!

Bomb Pop®

RED, WHITE AND BLUE!

A teeth-chattering frozen treat that looks like a rocket and tastes like a million.
Created by:

Merritt Foods Company

Kansas City, Missouri
Enjoy Bomb Pop at Worlds of Fun!

Facing a Stitchery Blitz

In late January, costume designer Dawna Welborn faced a mountain of material piled in a corner of the costume department. Since that time 49 miles of fabric have passed through her staff members' hands to be designed, sewn and sometimes manufactured into over 150 show costumes and about 4,500 costumes for the 1,500 Worlds of Fun Ambassadors.

In addition, the costume department is responsible for out-

as Grrrrtrude.

Mrs. Welborn has a hand in these get-ups, but her specialty is the show costumes. The most elaborate costuming this year is presented in the disco finale of the Tivoli Music Hall production of "Gotta Dance." The performers make a 52-second change from authentic 40's zoot suits and formal, padded-shoulder gowns into copper, brass and black attire for an elegant discotheque number.



fitting the larger-than-life characters, Sam Panda, Dan'l Coon and Grrrrtrude Gorilla. Their costumes require some unusual measurements. Sam, for example, shuffles around the park in 19-inch shoes weighing 5½ pounds each. Under his 20 pounds of fur is a 2-pound foam rubber "fat suit"; and beneath his 21-pound head is a "6-footer," who, if he were smaller, would find himself

Each year Dawna shows that she has a keen eye for current and future costume design. Most of Dawna's designs grow out of trips to Las Vegas, Los Angeles and New York; staff brainstorming sessions; and television musical specials. But, says Dawna, "Sometimes we just sit around and think up crazy ideas until they all fit together."



Have a nice day!

COOK PAINT AND VARNISH COMPANY

Che Pasta!

Enjoy authentic Italian dishes prepared from old-world family recipes by 9 Italian women cooks. A Kansas City tradition for 54 years!

Enjoy It Tonight

Italian Gardens

Restaurant • 1110 Baltimore

Visit our Ciao Lounge



Holiday Inn®

TRADEMARK

- FREE TRANSPORTATION TO AND FROM WORLDS OF FUN (Scheduled Basis)
- RESTAURANT • LOUNGE
- SWIMMING POOL

FAMILY RATE \$27.00

HOLIDAY INN TRADEMARK

FIRST STREET & BROADWAY
KANSAS CITY, MO. 64116 • 816/842-6700
Reservations through your nearest Holiday Inn

Come to a world of food that's fun!
(it's just minutes away)

International House of Pancakes

i HOP

OPEN 24 HOURS

5171 N. Chouteau Trafficway
4555 S. Noland Road

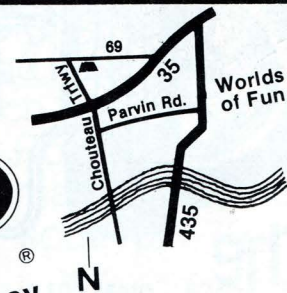


PHOTO TIPS

Here are some tips that can help you improve your pictures and give you a more pleasing record of your visit here.

For clear, sharp pictures—

- Start off with a clean camera lens. Remove dust and fingerprints with moisture and a clean, soft cloth.
- Hold your camera steady and gently squeeze the shutter release.

For interesting pictures with impact—

- Take plenty of close-ups.
- Include your companions in scenic pictures.
- Snap colorful subjects.
- Try different camera angles to keep the background simple.

Have extra film on hand. You don't want to run out in the middle of an exciting event.

KODAK FILM



WE GOT IT!



ENJOYED ...
THE WORLD OVER

Boyle's[®]

FAMOUS CORNED BEEF
KANSAS CITY, MO 64106

SHOPPING & SNACKING at Worlds of Fun

You'll find everything from souvenir hats to unique, antique-type gifts. We suggest you shop in the early or mid-afternoon for best selection and assistance.

AMERICANA

Cotton Blossom—a gift boutique of unusual variety.

Front Street Dry Goods and Electric Company—youth, fad and fun gifts for everyone.

Show Me Shop—walk up for souvenir fun.

Sharron's YumYum Tree—sweet-tooth satisfiers here.

Brim's n Bonnets—for fashion or shade, see brims for hats.

Which-A-Way Station—punch-a-ball and inflatable fun.

Livery Stable—outdoor shopping bazaar.

Clark's Trading Post—shirts, shirts and more shirts.

Worlds of Fun Post Office—gifts for the young at heart and young of age.

Spittin' Image—ol' fashioned photos of you.

Snap Shot Shop—film, flash cubes, souvenir slides and free camera loans. As you exit, leave your film at the camera shop for processing.

AERODROME

The Great Waldo Crankshaft's Prop Shop—a super selection of mobiles, kites, chimes and fun gifts.

BICENTENNIAL SQUARE

Game Street U.S.A.—test your skill and win a prize.

New Funtier—pinball and electronic fun at its best.

Uncle Sam's Skee-ball Hall—48 alleys of bowling fun.

Calamity Games—test your skill and win a prize.

EUROPA

La Petite Boutique Shoppe—a fine gift shop with something for everyone.

AFRICA

Diamond Mine—rings, bangles, beads and jewels from the mine.

Bwana's Bargains—stuffed toys of all sizes for all sizes of guests.

Tangiers Headgear—hunt or safari, headgear here.

Big Game Hunt—bag a big one at this electronic shooting gallery.

SCANDINAVIA

Victrix Cannon Range—ahoy there, matey! Fire at will.

Norsemen's Niceties—souvenirs and gifts with the Scandinavian flair.

Copenhagen Nogginvear—fashion or shade hats of all types.

Fjord's Pharmacy—tobacco, medications and sundries.

Swen's Swedish Sweets—delectable treats for fudge lovers!

Norma's Fine Finnish Funnel Cakes—unusual and delicious funnel cakes deep fried especially for you.

Arctic Arcade—fun and games the electronic way.

ORIENT

Rickshaw Richard's Exporters Ltd.—a world-wide shopping bazaar with many mysteries from the East.

Worlds of Fun features many restaurants and refreshment centers offering a wide selection of internationally-themed meals and snacks.

AMERICANA

Paddle Wheel Cafe—enjoy soup and a Hearty Chef's Salad with fresh garden greens and a variety of meats aboard our famous riverboat.

Pizza Pier—a pizza selection for every appetite.

The Sub Shop—giant sub sandwiches and rosette fry cakes—great early morning or late night treats.

Pretzel Bend—fresh hot pretzels, ice cream, Sam Panda sippers and fruit decanters to take home.

Cotton Candy Factory—fluffy cotton candy (in a bag or on a stick) and caramel corn.

Vittle Griddle—breakfast menu featuring a tasty ranchero-style taco. An all-American menu of king size hamburgers, cheeseburgers, chili and corn on the cob.

Custer's Last Stand—corn dogs and snow cones.

AERODROME

Cockpit Coolers—monster size cold drinks, candy apples and caramel corn.

Lucky Lindy's Lunch—the Commander triple-decker burger, lickin' good chicken and french fries.

BICENTENNIAL SQUARE

The Works—meal full of fun (children's special), burritos, corn dogs, steak sandwiches.

EUROPA

Cafe Internationale—fresh chicken and fish dinners, Italian-style spaghetti, corn fritters, corn on the cob, salads and deserts in the environment of a European sidewalk cafe.

Moulin Rouge—popcorn, candy and cold drinks . . . and on with the show!

Lamar's Libations—freshly squeezed lemonade and corn dogs on a stick.

Should you arrive early in the day, breakfast is served at the Vittle Griddle from opening until 11:30 a.m. each day. We can provide you with the fastest lunch and dinner service before or after the traditional meal times of 11:30 a.m. to 1:30 p.m. and 5 p.m. to 7 p.m.

AFRICA

Congo Clearing—super steak sandwich, hot dogs with the works, platter fries, onion rings and soft drinks.

Big Jack's Jungle Juice—candy apples, caramel corn and soft drinks.

SCANDINAVIA

Nordic Nook—English-style fish and chips for the seafood lover, Monster cheeseburger and assorted sandwiches.

Ice-candy—candy apples, caramel corn and Monster soft drinks.

Tivoli Music Hall—enjoy fresh hot popcorn, candy bars and soft drinks during our 1979 production called "Gotta Dance."

Smor Bord Cafeteria—featuring choice roast beef, crispy fried chicken, bar-b-q beef, chicken fried steak and assorted dinner entrees. Try a colossal baked potato with a surprise filling—it's 'nuf for a meal!

Bigger Dipper—ice cream cones and sundaes.

Daniel's Danish Deli—home of our famous two-foot-long deli sandwich—buy it whole or by the inch. Potato salad, giant dill pickles and cheese sticks.

ORIENT

Pagoda Soda—candy apples, caramel corn and Monster soft drinks.

Rangoon Refresher—featuring chicken chow mein, oriental hot dog kabob, onion rings and a variety of sandwich specialties.

AROUND THE WORLD

Popcorn wagons, ice cream stands and fresh fruit juice carts are located throughout the park.

**Best Western
Airport Motor Inn
and Campground**
Open Year Round
6 Miles North of K.C.I.
Airport on I-29



30 Min. to Convention Center
Sports Complex, Worlds of Fun
I-29 and HH Exits
Platte City, Mo.
816-464-2300

Call or write today for
free estimate.

RENSENHOUSE ELECTRIC SUPPLY CO.

1011 Truman Road
Kansas City, Mo. 64106
(816) 842-7350

1614 State Ave.
Kansas City, KS 66102
(913) 281-0324

CONSOLIDATED MEATS...
we're helping to make
Kansas City restaurants the
best in the world.



**Consolidated Meat
Distribution Center, Inc.**

6504 Inland Drive
Kansas City, Kansas 66110
(913) 375-1850

"TAMM GOOD LUMBER"

Everything in Construction
and Industrial Lumber

231-7221

3232 East 18th

**ALBERT TAMM
LUMBER COMPANY**

**FOR
FUN**

"Le Taxitour"



*Replicas of
vintage taxis
equipped with
Firestone tires*

**FOR
LONG
MILEAGE**

**STEEL
BELTED
RADIAL 721**



**The
Fuel Fighter**
Firestone

Cockatoo News

At Worlds of Fun, Polly may want a cracker, but she deserves caviar and champagne, delicacies more suited to a star's dressing room. You see, "Cheep Thrills" is a bird show that stars five multi-colored macaws and cockatoos. Five times a day they strut through more than 15 tricks during 20 fun-filled minutes of this "Gee"-rated show.

Starlet Ali Macaw stands on the top of a ball and walks it the length of the gypsy wagon stage. Riding a bike and playing dead are easy as seed-spitting for Joey Feather-ton. Trainer Weldon Middlebrooks teaches his winged pupils to perform other human-like behaviors including answering the telephone, playing basketball and cards, and also painting portraits of audience volunteers.

"Once they learn their routines, they're eager to work," says Middlebrooks, explaining that intellectual stimulation wins out over boredom any day.



Back for the second year and featuring a new lineup of tricks, "Cheep Thrills" is located across from the Schussboomer roller coaster in Scandinavia.

Landscape Magic

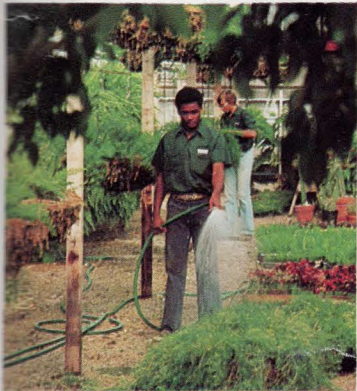
Could it be magic that keeps Worlds of Fun in full bloom during its seven-month operating season? Ask the 45 "midnight magicians" busily working each night after the last guest is gone. They'll tell you it's a lot of hard work.

Continual care is required to maintain the 153-acre perennial plant haven with over 180,000 plants, flowers and trees. Landscape design has been a predominate consideration beginning with initial construction of the park eight years ago. For example, the 1½-mile train track was staked out five times to avoid 100-year-old native oaks and elms. Installation of the Viking Voyager was delayed six weeks to avoid disturbing the large trees that now surround it. Over 2,000 trees have

been transplanted to complement the park's unique world themes. Such trees as American pin oak, European sycamore, African dracaena, Norwegian spruce and Japanese dogwood are appropriately dispersed throughout the native foliage of each themed area.

Hanging baskets containing a variety of ferns, begonias, petunias and ivy are dramatically beautiful, but can present special problems for the landscape staff. Five years ago, nine large tropical plants were brought to the park from California and Florida. When they grew too large to maintain during the winter, they had to be sold. Anyone for a 150-pound basket?

Stroll past the Worlds of Fun floral calendar clock which adorns a hillside in Africa. During the nighttime routine of watering, fertilizing and mowing, the date is changed by the landscape magicians. Tiny potted plants are



Left: Five greenhouses are used in the continual process of maintaining the 153-acre plant haven with over 180,000 plants, flowers and trees.



Right: Tiny potted plants are trimmed and fitted daily in the floral calendar clock in the African section.

trimmed and fitted into perfect patterns so the message is clear—and clearly beautiful.

With every turn, you'll notice a splash of floral color and aroma. You can identify many of the park's plants and flowers by look-

ing carefully for identification markers in most beds.

Worlds of Fun is always in bloom, thanks to the landscape team of midnight magicians. After a good night's work, however, they'll tell you it's not magic at all!

Ahoy Landlubbers

Thousands of miles from the open sea, a pair of veteran Hollywood performers from the movie days of the fifties have found a landlocked home port at Worlds of Fun. The sparkling white Cotton Blossom, a stern-wheel veteran of the 1951 Hollywood film "Show Boat," and the oft-filmed pirate ship Victrix have become centers of activity in the Americana and Scandinavian sections since the opening of Worlds of Fun in 1973. The two ships were purchased at a now-famous Metro-Goldwyn-Mayer studio auction for less than the price of Judy Garland's "Wizard of Oz" slippers (\$15,000).

continued on page 20



MUNCH A



Whether you Eat it In, or Take it Out, you'll rave about dee-luscious Minsky's Pizza. Noland Road location easy to reach from Worlds of Fun, Royals' Stadium or Truman Library...just south of I-70.



4362 S. Noland Road
373-9500

10630 Metcalf
341-9292

5105 Main
561-5100

63rd & Quivira
268-9000

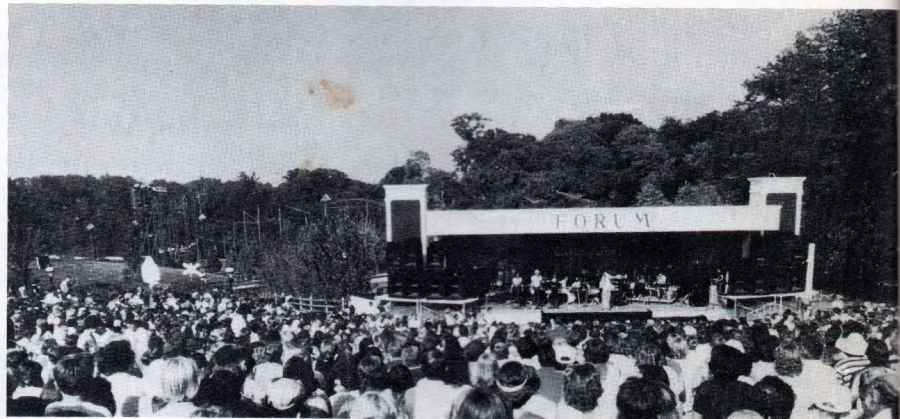
Minsky's Pizza & Pasta, 5031 Main

Worlds of Fun's most predominate theme...

EXPANSION



'73 Since it first opened, Worlds of Fun has grown so much it barely resembles the park guests visited that first year. When the very first guests arrived on May 19, 1973, traditional favorites like the Zambezi Zinger, Viking Voyager and Tivoli Music Hall were already in place among the 60 rides, shows and attractions. Nearly all of the original attractions are still in operation, but several have changed their look and name to reflect a new function. However, the biggest changes have come as part of the park's ongoing expansion program and super-star talent concerts through the years.



'74 On June 16, 1974, Jeannie C. Riley became the first entertainer to perform on the stage of the newly constructed Forum Amphitheatre. The popularity of the new facility quickly took off

with talents like Loretta Lynn, Kenny Rogers and Mac Davis appearing that year. There was little doubt by the end of 1974 that Worlds of Fun was firmly established as one of the top concert locations in Kansas City.



'75 The Red Baron children's ride was added and the Forum was

expanded and improved in 1975. Bill Cosby and Roy Clark appeared at the spacious outdoor Forum. During a two-week period in August the Worlds of Fun single-day attendance record was broken three times as Blood, Sweat & Tears (19,110); Captain & Tennille (19,378); and finally Neil Sedaka (22,954) make their presence known.

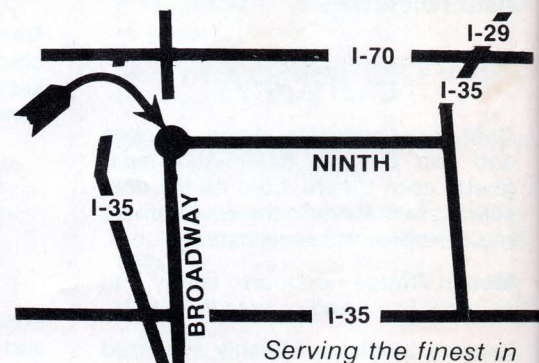
AN EATING AND DRINKING EMPORIUM

The BROTHERS HOULIGAN

900 BROADWAY 474-5505

Monday thru Thursday
10:30 a.m. to 10:00 p.m.
Friday—10:30 a.m. to Midnight
Saturday—4 p.m. to Midnight

FEATURING:
KANSAS CITY'S
LARGEST
STEAK DINNER



Serving the finest in
Steak and Broiled Seafood

ALL YOU CAN EAT
SPECIALS
5 NIGHTS WEEKLY



'76 Bicentennial Square, the largest capital expansion program to date, was added for the celebration of America's 200th birthday. The park told guests "Have We Got A Day Planned For You," and the Screameroller made its debut as one of the most innovative roller coaster rides in years. New games buildings were included in Bicentennial Square to provide competitive fun for the entire family.



'77 A park-wide expansion in each of the five sections of the internationally-themed park. The Wobble Wheel was placed next to the Screameroller in Americana, and the Funfighters were "run out of town" and chased into Yumma Yucca Mesa where they took to robbing trains. The Singapore Sling became a dominant feature in the Orient. Kinder Garden, a playground with rides and innovative recreational equipment for toddlers, was added to Scandinavia. The Pygmy Playhouse, a puppet show facility, was added to the African section, and the Bounce-A-Roos children's kangaroo ride leaped into Europa.



'78 Things were really flying in 1978 with the addition of the Aerodrome area featuring the towering Barnstormer biplane ride. The aeronautically-themed section included Lucky Lindy's Lunch, The Great Waldo Crankshaft's Prop Shop and the relocated Red Baron children's ride. Other additions in 1978 included the Tots Yachts boat ride and Humpty's Haven playground area, both providing additional entertainment for Worlds of Fun's youngest guests in Scandinavia.



'79 The seventh season is here, and as might be expected, Worlds of Fun is still improving and expanding facilities throughout the park. In another park-wide expansion program, this year's additions include the ZULU and Silly Serpent rides in Africa, the Beetle Bumps ride in the Orient, the Wing Ding airplane ride in the Aerodrome, Le Carrousel merry-go-round in Europa and Humpty's Show Chateau in Scandinavia. Hourly ride capacity has increased from 18,000 in 1973 to over 27,000 in 1979, and the number of attractions has increased from 60 to over 95. Every year the shows presented at the Tivoli Music Hall, Moulin Rouge Theatre and other show facilities are completely new productions.



*It's fun
taking fun food
to fun places!
And getting
it there at
the peak of
freshness
is twice the fun.*

Mid-Central Fish & Frozen Foods

A service of **SYSCO Corporation**

1656 Washington, Kansas City, Missouri 64108
Phone: (816) 221-5555

*Welcome
to Kansas City.*

*We're the big store
in Crown Center
with all the men's
and women's fashion,
the unique gifts,
the excitement that make us
the specialty store
to Kansas City.*

*Looking for something
special to take home?
You'll find it at Halls in
Crown Center. . .
for remembrances to give
and keep. Come in,
and you'll see why we're*

halls IN CROWN CENTER
**KANSAS CITY'S
discovery
store**

A Worlds of Fun welcome from Shaggy Bear, Macho Monkey, Hooty Owl, Candy Camel and the rest of the gang.

Test your skill and win one of these furry friends in the games area located in Bicentennial Square.

**TREAT YOURSELF
AT HOME AS
YOU DO AT
WORLDS OF FUN**



FAIRMONT.



AVAILABLE AT
YOUR FAVORITE
STORE

**3805 Van Brunt
Kansas City, Missouri**

**GREASE
THE SAKE**

KC's only revolving
rooftop restaurant
and lounge.

Holiday Inn®

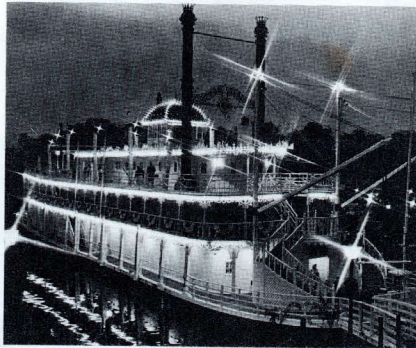
City Center

1301 Wyandotte 221-8800

AHOY LANDLUBBERS

continued from page 15

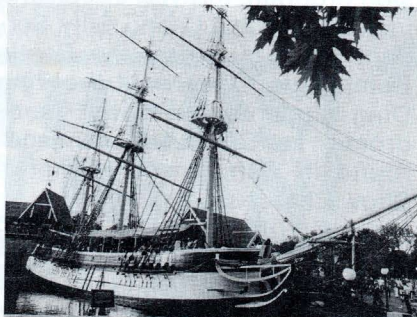
But the ships cost more than \$450,000 to transport to Kansas City and reconstruct in their unique environments.



Originally constructed in 1950, the Cotton Blossom cost \$375,000 and took eight months to build. Following the filming of "Show Boat," it was used in more than two dozen other feature films including "Raintree Country." It was later used for numerous television commercials.

Browse through the shopping boutique on the Cotton Blossom or stop for a Hearty Chef's Salad at the Paddle Wheel Cafe, but don't forget to have your picture taken at the Spittin' Image photo shop on the upper deck.

On your way through Scandinavia, board the three-masted schooner, Victrix. Built in 1948, the Victrix saw action in many movies including "Hawaii" and "Running of the Tide."



Today, on deck, you can capture a view of a calm Scandinavian sea or have fun taking aim with replica man-o-war cannons on its main deck firing range.

Fuel for Fun

It takes approximately 1,500 Ambassadors to staff Worlds of Fun's 95 rides, shows and attractions and provide support services necessary for efficient operation of the park. Many of the Ambassadors are easily seen by guests operating rides, preparing food, and running the games. However, there are many others who work just as hard to make things happen behind the scenes.

At the theatres, it's the performers who receive the applause, but



The first responsibility of each Ambassador is to make your visit an enjoyable one.

the technical effects on lights and props are handled by stage crew members. The stage crew also works with the road crews of the super-star entertainers at the Forum Amphitheatre.

Nocturnal by necessity, the landscapers stay up all night getting ready for the next day's guests. Each night the entire park is washed down by high pressure hoses and appropriate attention is given to flower beds, tropical plants and acres of grass.

Keeping over 50 food outlets and merchandise shops supplied

Have a GREAT TIME at Worlds of Fun



control cash register co.

1738 MAIN STREET/KANSAS CITY, MISSOURI 64108/816-842-5185

is a huge task assigned to the warehouse crew. On a hot day they will deliver as much as 15 tons of ice to keep your soft drinks cold!

The costume department has a colossal task of producing and maintaining 4,500 costumes for the Ambassadors and nearly 150 for the show performers. Can you imagine doing 294 loads of wash every week?

Worlds of Fun Ambassadors work hard, but there is plenty of time for recreation, too. An extensive activities program includes intramurals, parties, movies and trips to other parks. It is hard to beat a job working for fun and which features fun after work!

If you or someone you know is interested in becoming part of a team that will entertain more than 1,275,000 guests this year, give us a call. Some openings occur when Ambassadors leave for a vacation or return to school, so applications are taken throughout the season. Applicants must be at least 15 years of age and have a social security number. Call the personnel office at 454-4545 for more information.

More Entertainment...



DoLores Hadley at home in her workshop with her "family"

Does anybody really know what happens in a forest when no one is there? DoLores Hadley's marionettes provide the answer, complete with gnomes, witches and elves cavorting about an enchanted forest in the Flying Circus puppet pavilion. DoLores Hadley and her puppets are back for their

7th season with puppet wizardry for all ages.

Humpty's Show Chateau is a new puppet facility for toddlers in the Humpty's Haven playground area in the Scandinavian section of the park. More of DoLores Hadley's creations are featured in a show simple enough for children to enjoy.



For an eating experience that's remarkably different, lunch or evening meal. A place to go to avoid the crowds and relax while you enjoy fine wines and Emile's own special recipes, or take home a delicious selection from 40 varieties of smoked meats and sausages.

Visit us at 302 Nichols Road on the Country Club Plaza or at 95th and Nall in the Meadowbrook Village Shopping Center.

Salt Water Fun

It's a "Hometown Girl Makes Good" story at the Fins and Flippers dolphin show. When Linda Hutchings worked as a secretary at Worlds of Fun in 1973, she became fascinated with the

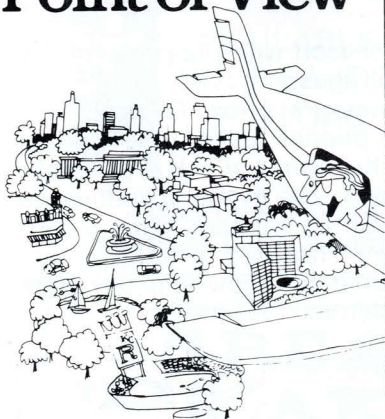
offered a trainer's position. Linda spent the next three years training dolphins in North Carolina and Georgia. Now, back at Worlds of Fun, she is coaching Skipper and Dolly through new behaviors never before seen at the park. The mischievous dolphins are always



park's fun-loving dolphins. Her interest was noticed by the producer of the show, and she was

good for a splash, a splash and a laugh. Choose a first row seat if you like salt water fun!

Look at KC From Our Point of View

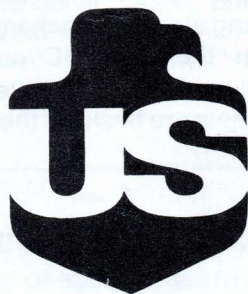


We're ready to fly you all over K.C. ... Dawn. Evenings. Daytime. Anytime. See Worlds of Fun, the Plaza, sports complex, downtown ... even your own back yard. Don't miss beautiful K.C. this year ... see it all from our point of view.

Royal Air

Air Charter • Commuter • Flight Training
474-7093
500 Richards Road / Downtown Airport
Kansas City, Missouri 64116

people,
pride & spirit



U.S. ENGINEERING CO.

SINCE 1893

Kansas City, Missouri Loveland, Colorado Reno, Nevada

MARBLE HALL

RESTAURANT

6TH & MAIN

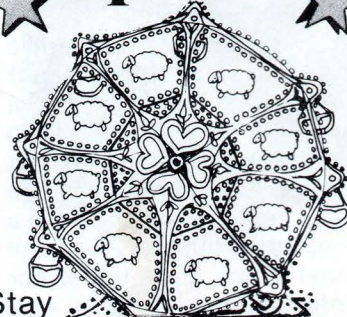
KANSAS CITY



Roundup

the whole family and head downtown to Marble Hall. Named after the famous Kansas City gambling house of the 1870's. Marble Hall's menu will satisfy everyone. Special Children's Menus.

Worlds of Fun Special



Stay one night at regular price, pay only \$10.00 for your second night per room.

- ★ Large Rooms ★ Free Parking
- ★ Swimming Pool ★ Directly off I-70
- ★ Children 17 and under Free (with parents)

Valid Friday, Saturday and Sunday only
This coupon must be presented at time of registration.

Sheraton Downtown

SIXTH & MAIN STREETS
KANSAS CITY, MISSOURI 816/842-6090

IT'S A KC EXPERIENCE

The home of Worlds of Fun is a unique experience.

Stretch your Worlds of Fun visit to include other Kansas City attractions. Unprecedented entertainment provides more family good times than ever before. Take an extra afternoon, day or days to experience the energy and vitality of this progressive, midwestern city. You'll be captured by the host of "doable," affordable treats that make Kansas City an entertainment mecca. Take time to see the numerous parks, outdoor artwork, sightseeing attractions and prime residential areas that enhance its beautiful rolling terrain.

Some of Kansas City's most traditionally-renowned shops and restaurants are found among 155 establishments in the nationally-recognized Country Club Plaza. Designed in 1922 by J.C. Nichols, it has become recognized as

"America's Original Shopping City." This unique shopping district is designed in a Spanish motif and covers 55 acres of discriminating stores and beautiful landscape. Free concerts on the banks of Brush Creek on the Plaza are attended by thousands who enjoy the music of the Kansas City Philharmonic, Duke Ellington, Stan Kenton and the Glenn Miller Orchestra.

Crown Center, truly a city-within-a-city and one of the nation's largest privately funded urban redevelopments, is only a few blocks from downtown Kansas City. This ultra-modern utopia offers a 750-room luxury hotel complete with five-story waterfall, hillside lobby, gardens and restaurants with international appeal.

Crown Center Square offers a host of spring, summer and fall folk festivals, concerts and art fairs in an open-air environment with contemporary accents. Be sure to allow plenty of time to browse through 90 nearby shops where you can find unique gifts, furs, jewelry, sophisticated fashions and contemporary home furnishings.

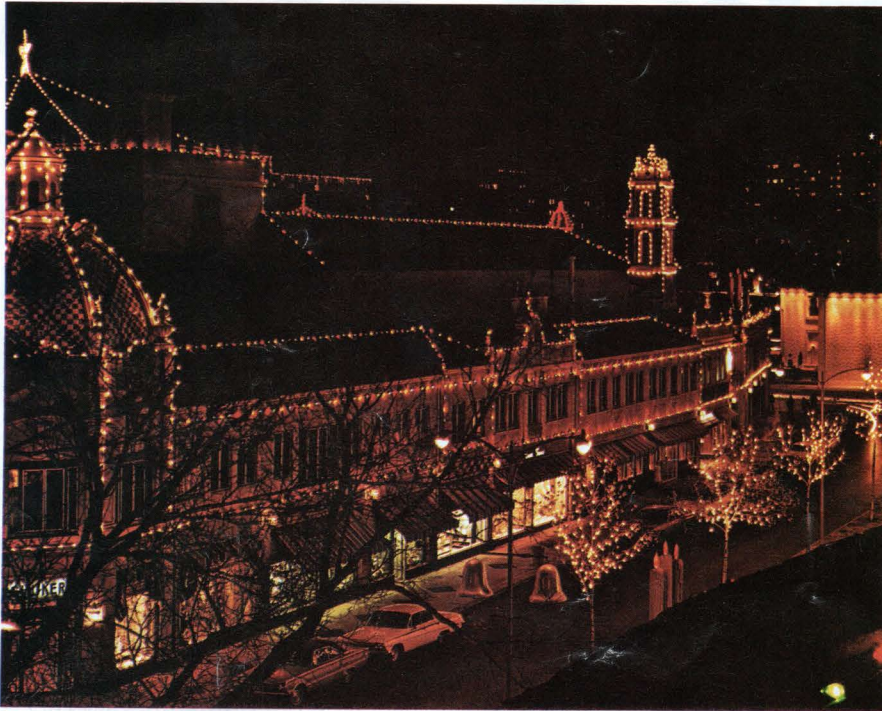
Exuding an exciting blend of the old and the new is Westport Square. The 1830's saw wagon trains outfitted in Westport for the California, Sante Fe and Oregon Trails. Today it is a restoration and re-creation of the nineteenth century from which it grew. Inviting storefronts and alleys lead young and old through restored shops, art galleries, restaurants and refreshment stops. Unique court-

Top off one of Kansas City's greatest sights with one of Kansas City's greatest meals.



While you're in Kansas City, you won't want to miss the Harry S. Truman Sports Complex, where you can tour both Royals and Arrowhead Stadiums. And while you're at the Sports Complex, you won't want to miss Arrowhead Inn Restaurant, where you can enjoy a truly great lunch or dinner in a unique atmosphere of pro football history and memorabilia. For reservations, call 921-9393. Or while you're at the Sports Complex, just drop in.





yard gathering areas and a tree-studded landscape complement a Westport visit.

Kansas City also boasts an eventful, major league community. Three-time division champions, the Kansas City Royals are housed in a modern, 40,000-seat baseball stadium complete with a spectacular water display and scoreboard. Nearby is the 78,000-seat Arrowhead Stadium, home of the Kansas City Chiefs. It is nationally recognized as the prototype for many recently-constructed football facilities. Kemper Arena, home of the NBA Kansas City Kings and site of the 1976 Republican National Convention, has won architectural awards for its unusual design. Its pillarless circular frame provides unobstructed viewing from all 17,000 seats. Kemper adapts well to professional hockey, the

continued



Good company deserves great food.

WESTPORT
ONE

Dining, Dancing and Entertainment Nightly.

Westport Road & Southwest Trafficway

WE1-1448

KANSASCITY

Visitor
Information
Phone

It all happens here... In Kansas City.

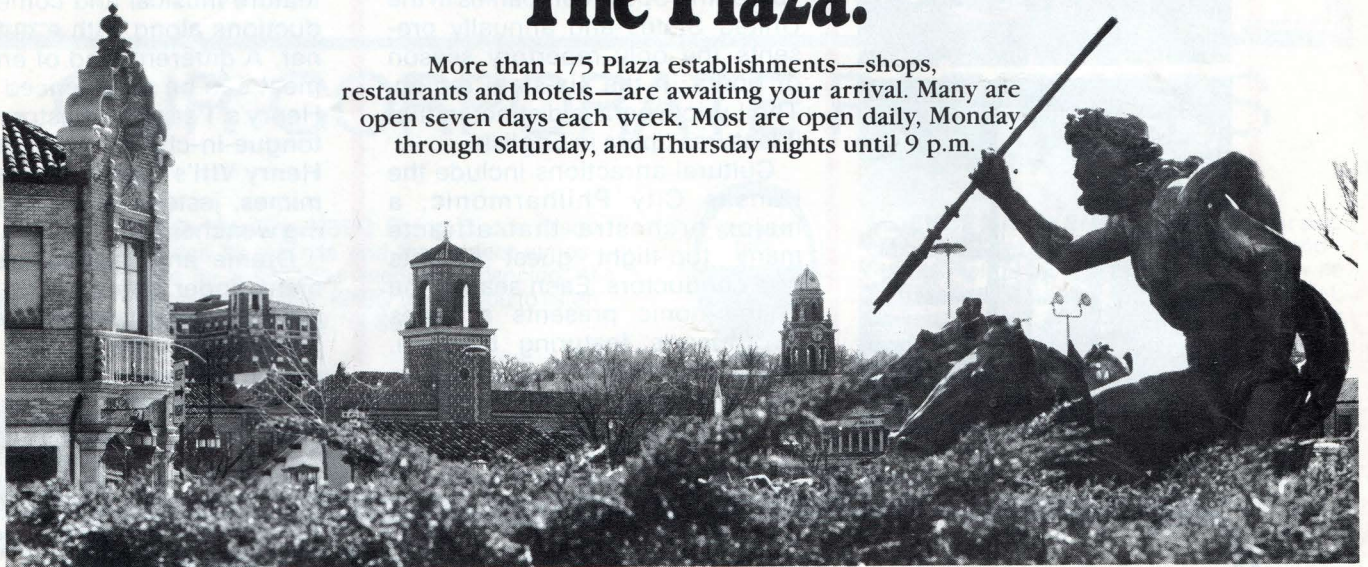
For complete information on today's events, give us a call.

474-9600

**A SERVICE OF
THE CONVENTION AND
VISITORS BUREAU OF
GREATER KANSAS CITY.**

After you've experienced Worlds of Fun, experience one of the world's great shopping districts. The Plaza.

More than 175 Plaza establishments—shops, restaurants and hotels—are awaiting your arrival. Many are open seven days each week. Most are open daily, Monday through Saturday, and Thursday nights until 9 p.m.



Hi! May I Help You?

GATES AND SONS

At Gates and Sons, we always greet you as you come through the door.

We're not rushing you.

Our greeting is just a way of showing you that we care. We pride ourselves in treating you as an individual ... with courtesy and personalized service.

So when you think of barbeque and fast, efficient service, you'll automatically think of Gates and Sons.

Gates and Sons . . . *always eager to serve you.*

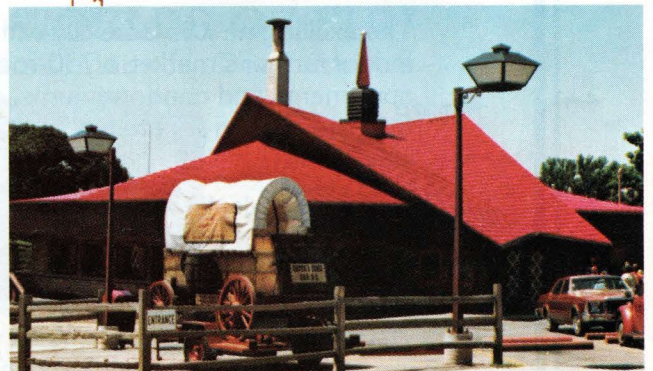


104th & 40 Hwy • Brooklyn at 12th
Paseo at 47th • 10th & State
103rd & State Line

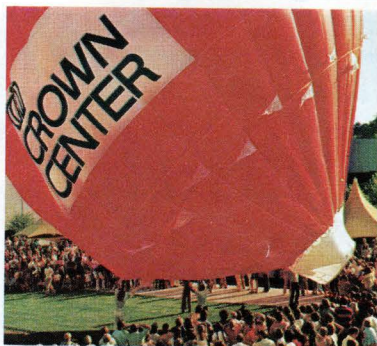
OPEN SEVEN DAYS PER WEEK



©Pepsi and Pepsi-Cola are registered trademarks of PepsiCo, Inc. NY, NY



**IT'S A
KC
EXPERIENCE**



prestigious American Royal Livestock and Horse Show, and concerts by nationally-known entertainers.

For the theatrical sophisticate, the Missouri Repertory Theatre provides contemporary and classic drama. The Lyric Opera of Kansas City is ranked among the 15 leading opera companies in the United States and annually presents the only repertory season of opera in the six-state region. The Lyric Opera is distinct in that it features opera in English.

Cultural attractions include the Kansas City Philharmonic, a major orchestra that attracts many top-flight guest soloists and conductors. Each season the Philharmonic presents a series of concerts featuring baroque, classical, romantic, impressionistic and contemporary works as well as jazz and pop music.

The Kansas City Ballet is the only professional ballet company in Missouri. The repertoire includes classics such as "Swan Lake," "Tarantella," "Mazurka," "Romeo and Juliet Pas de Deux" and some contemporary tributes.

Two equity dinner theatres, Tiffany's Attic and Waldo Astoria feature musical and comedy productions along with a buffet dinner. A different kind of entertainment can be experienced at King Henry's Feast in Westport. It's a tongue-in-cheek re-creation of Henry VIII's favorite inn featuring mimes, jesters, royalty and singing wenches.

Drama and musical entertainment under the summer stars is provided by Starlight Theatre in Swope Park, the second largest municipal park in the United States. Also within this rambling park lies the Kansas City Zoo—

continued on page 29

Crown Center
You've got to see it
to say you've been
to Kansas City!



The exciting new 85-acre city-within-a-city offers 85 unique shops and restaurants, an indoor farmer's market, a 730-room hotel with a five-story high hillside waterfall, luxury apartments and condominiums, a 10-acre landscaped square for community events, over one million square feet of office space, and The Forum conference center. Come stay awhile!

You've got style. We've got style.



25th and Grand, Kansas City, Mo.

THE ELMS—featuring the finest in food and entertainment, meeting, and banquet facilities for 10 to 500. Enjoy Kat Ballou's featuring live entertainment Friday, Saturday and Sunday. Enjoy elegant dining at the La Terrazina Restaurant with Tableside cooking by our specially-trained staff. Advance reservation required.

THE Elms Hotel

Regent and Elms Boulevards
Excelsior Springs, Missouri 64024

1-(816)-781-8500 1-(816)-637-2141

Take advantage of either plan available to our guests: The American Plan includes breakfast, dinner and lodging for two: \$42. The European plan includes breakfast, dinner and lodging for two: \$49.

Golf facilities are available at a near-by country club. The Elms will be happy to make reservations for our guests who wish to play golf during their stay.

OUR CORPORATE PARTNERS



KBEQ-104: The KBEQ Flying Circus Disco provides all the hits and the perfect atmosphere for a fun-filled evening of dancing. At 104 on the FM dial, KBEQ invites you to listen to the one and only "Q Sound."



COCA-COLA TIVOLI MUSIC HALL: At Worlds of Fun, "Coke adds life" to the air-conditioned Tivoli Music Hall. The 1979 show, "Gotta Dance," features a 16-member cast and a 14-piece orchestra performing country, Broadway, big band and disco music. Something for everyone. So, grab a Coke and head for the show.



STANDARD OIL SCREAMROLLER: The Amoco Sports Club invites you to experience Kansas City's most exciting sport—Screamrolling! See your friendly Standard Oil dealer. Their job is you.



FRONTIER AIRLINES

FRONTIER AIRLINES TRAMS: Everyone has a favorite ride, but your first ride at Worlds of Fun will always be on Frontier—the Frontier Trams to and from the main entrance. Discover the new Frontier on your next trip to Denver, Las Vegas or any of Frontier's 100 destinations in the United States, Canada or Mexico.



SCIENCE DIET KENNELS: Your cat or dog can enjoy free lodging at the air-conditioned Holiday Science Diet Kennel while the family visits the park. Science Diet, served to your pet upon request, is available at better pet shops, kennels and grooming parlors.



FIRESTONE: The Firestone Le Taxitour is good fun for the entire family. The Firestone 721 fuel fighter can save you money on gasoline bills. That's good news for America!



WDAF-61 COUNTRY: The Worlds of Fun Railroad has been rankled by holdups and the word is out that those ornery funfighters are being staked by WDAF-61 Country.



COMMERCE BANKS FINS & FLIPPERS SHOW: The mischievous dolphins, brought to you by Commerce Banks, are good for a splash, a splash and a laugh as they soak the first few rows with salt water fun! Commerce is the bank that asks, "What can we do for you?"

ENJOY YOUR DAY AT WORLDS OF FUN

Best Wishes — Ken Jenkins Sr., Ken Jenkins Jr., Doc Jenkins

WE'RE ON CALL
24 HOURS A DAY—
7 DAYS A WEEK
TO SERVE YOU
THE BEST WE CAN



1137 SWIFT
N.K.C., Mo. 64116
471-3785—DAYS
741-2875—NITE
452-4070—NITE

COMPLETE MACHINE SHOP & WELDING FACILITIES TO DO ANY KIND OF JOB
FOR INDUSTRIAL, COMMERCIAL, FARMING & INDIVIDUAL NEEDS

KC AREA MOTELS/HOTELS/RESTAURANTS



Professional Approach to Office Products

Since 1893

Schooley, inc.

3401 Truman Road
Kansas City, Mo. 64127
816-231-6650

Pisciotta's

FOOD DISTRIBUTORS

217 EAST MISSOURI AVE.

KANSAS CITY, MO. 64142

You're just 5
minutes away from

**antioch
center**



an enclosed mall with
115 stores & shops
to serve you!

At the Crossroads of Antioch, Vivion & Chouteau

For your convenience, Worlds of Fun provides a free reservation service. For individual or family accommodations, please make your reservations at the Guest Relations Office at the main entrance as soon after you arrive at the park as possible.

For advance reservations, write Worlds of Fun Hotel Reservations, 4545 Worlds of Fun Ave., Kansas City, Missouri 64161, or call (816) 454-4545.

BEST WESTERN ANTIOCH INN, 2620 N.E. 43rd Street, Kansas City, MO. 64117, (816) 453-6550. Easy access off I-35; 5 miles to Worlds of Fun; 6 miles to downtown K.C.; 15 miles to Truman Library.

BRECKENRIDGE INN, I-435 & Front St., Kansas City, MO. 64120, (816) 483-9900. Reservations USA: (800) 821-2552, MO: (800) 892-2909. Close to sports complex and Worlds of Fun.

CROWN CENTER HOTEL, One Pershing Road, Kansas City, MO. 64108, (816) 474-4400. Crown Center Hotel is the focal point of Hallmark Cards 85-acre \$300-million total environment community of artistically-designed shops, restaurants, entertainment and cultural facilities.

HILTON AIRPORT PLAZA INN, I-29 at 112th St., Kansas City, MO. 64195, (816) 891-8900. KCI airport, complete recreational facilities.

HILTON PLAZA INN, 45th & Main, Kansas City, MO. 64111, (816) 753-7400. On the Country Club Plaza, famous shopping area, entertainment and cultural center.

HOLIDAY INN - CITY CENTER, 1301 Wyandotte, Kansas City, MO. 64105, (816) 221-8800. 28-floor, full-service hotel with parking; center of downtown. 1 block from Convention Center.

HOLIDAY INN SOUTH, 11801 Blue Ridge Ext., Kansas City, MO. 64134, (816) 763-0600. Located on US 71 South at Truman Corners Shopping Center, 16 miles to downtown, 20 miles to Worlds of Fun.

HOLIDAY INN - TRADEMART, 1st & Broadway, Kansas City, MO. 64116, (816) 842-6700. Located at Municipal Airport, 10 miles to Worlds of Fun, free transportation from hotel on a scheduled basis.

HOWARD JOHNSON'S MOTOR LODGE NORTH, 1600 Russell Road, Kansas City, MO. 64116, (816) 453-5210. 3 miles to Worlds of Fun, 15 minutes to Truman Sports Complex, 10 minutes to downtown.

MARRIOTT HOTEL - KCI, 755 Brasilia Ave., Kansas City, MO. 64195, (816) 464-2200. Located at Kansas City International Airport just off I-29.

RAMADA INN - AIRPORT #5 (A Breckenridge Hotel), 7301 N.W. Tiffany Springs Road, Kansas City, MO. 64153, (816) 741-9500. 8 minutes from airport, 20 minutes to Worlds of Fun, live entertainment.

RAMADA INN CENTRAL, 610 Washington, Kansas City, MO. 64105, (816) 421-1800. Directly located on I-70, I-35 and I-29. Within short distance of major business, shopping and entertainment.

RAMADA INN SOUTHEAST, 6101 E. 87th Street, Kansas City, MO. 64138, (816) 765-4331. Five minutes to sports complex, 15 minutes to Worlds of Fun, 10 minutes to Plaza, 20 minutes to downtown.

RODEWAY INNS OF AMERICA, I-435 at Metcalf, Overland Park, KS. 66211, (913) 383-2550. Convenient to shopping areas, minutes from Arrowhead Stadium.

SHERATON DOWNTOWN, 6th & Main Street, Kansas City, MO. 64106, (816) 842-6090. Easy access to everything—sports, attractions, shopping and convention center.

SHERATON ROYAL HOTEL, 9103 East 39th St., Kansas City, MO. 64055, (816) 737-0200. Health club, game room, tennis, swimming. On I-70 adjacent Truman Sports Complex; minutes to Kansas City's largest shopping centers, Worlds of Fun, Truman Library.

TRAVEL LODGE - KCI, 11828 Plaza Circle, Kansas City, MO. 64151, (816) 464-2525. Less than two miles from KCI; exercise room, saunas, therapy pool.

A complete listing of Kansas City area hotels and motels is available upon request at our Guest Relations office located at the main entrance at no charge.

CAMPGROUND GUIDE

Kansas City offers several fine campground facilities. Below is a partial listing of area campgrounds.

MILLER'S KAMPARK, 145 North Stewart. Jct. M-152 & I-35, Liberty, MO. 64068, (816) 781-9831, 30 tent spaces, electricity, 60 trailer sites, sewer. North of Worlds of Fun.

RAMADA CAMP INN, Route #1, Lone Jack, MO. 64070, 6 miles south on the Oak Grove exit off of I-70, (816) 625-4792. 100 trailer sites, full hookups, water/power, tent spaces; south and east of Downtown Kansas City, Worlds of Fun.

TRAILSIDE CAMPER'S INN OF K.C., Oak Grove, MO. (816) 443-2302. On I-70; I-70 at Grain Valley exit, Grain Valley, MO. Free pool, showers, store, arcade, snack shack, picnic and meeting shelter. Adjacent to public golf course.

A complete listing of Kansas City area campgrounds is available upon request at the Guest Relations office, located at the main entrance. No charge.

ARROWHEAD INN, Arrowhead Stadium, Truman Sports Complex, I-70 & Blue Ridge Cut-off, 921-9393. Steaks and seafood featured in the unique public dining room in Mediterranean decor. Football photographs and memorabilia add to environment for enjoying excellent fare, featuring a salad bar, too. Closed during Chiefs games.

THE BROTHERS HOULIGAN, 900 Broadway, Kansas City, MO., 64105, 474-5505. A touch of old Ireland in beautiful downtown Kansas City. Just three blocks from Bartle Hall. Serving the finest in steaks, seafood and sandwiches, plus Kansas City's only one-pound pork chop. Serving breakfast, lunch and dinner 6 days a week. Open 10:30 a.m. to 10 p.m. Monday through Thursday; 10:30 a.m. to midnight, Friday; 4 p.m. to midnight, Saturday. Your favorite spirits served from 11 a.m. to closing.

CASCOONE'S, 3733 N. Oak Trafficway, 454-7977. Genuine Italian specialties make everyone rave "Mamma Mia" over the lasagna, and ravioli, particularly. Pleasant decor in a lively atmosphere with most outstanding feature... its generously served fare. Steaks and seafood too.

EMILE'S CAFE/DELI, 302 Nichols Rd., 753-2771, 95th & Nall, Meadowbrook Village, 381-0205, 516 Felix, St. Joseph, MO., (816) 232-9733. A cafe/deli with flavor of the "old world" in mind. Imported wines and cheeses to complement over 40 varieties of sausages of our own production, smoked products and fresh choice meats. The romantic European cafe atmosphere with unique luncheon and evening items. Plaza Store hours: 10 a.m. to 9 p.m., Monday through Saturday.

GATES AND SONS RESTAURANTS, 104th & E. 40 Hwy., Kansas City, MO., 353-5880, 12th & Brooklyn, Kansas City, MO., 483-3833, 47th & Paseo, Kansas City, MO., 921-0409, 103rd & State Line, Leawood, KS., (913) 383-1752, 10th & State, Kansas City, KS., (913) 621-1134. Four locations to better serve you your favorite barbecued "treats". The "treats" barbecued daily are choice brisket of beef, imported ham, pork ribs, beef or pork sausage, chicken and lamb.

GREAT STAKE, 1301 Wyandotte, 221-8800. Atop Holiday Inn City Center, enjoy the view from the revolving 28th floor while dining on the famous Kansas City strip steak, custom cut at your table. Menu includes prime rib steaks and seafood. Special appetizers, freshly made bread and a selection of salads. Monday through Thursday, 5:30 p.m. to 10:30 p.m., Friday and Saturday, 5:30 p.m. to 11:30 p.m. Live entertainment featured 9 p.m. nightly in adjoining lounge.

INTERNATIONAL HOUSE OF PANCAKES, 5171 N.E. Chouteau Twfy., Kansas City, MO., 454-0961, 4555 S. Noland Rd., 373-0004. Full service family restaurant open 24 hours at both locations. Menu price ranges from \$.99 to \$4 featuring pancakes and a complete dinner menu.

ITALIAN GARDENS, 1110 Baltimore, Kansas City, MO 221-9311. Popular lunch and dinner spot famed for having nine Italian women cooking their favorite recipes. Since its establishment in 1925, "The Gardens" has been owned and managed by the same family. Warm, hospitable place for family and friends to enjoy Italian specialties, steak and seafoods.

KING HENRY'S FEAST, (Theatre Restaurant), 811 West 39th, Kansas City, MO., 531-5031. Eat, drink, and be merry in this raucous tongue-in-cheek re-creation of the favorite Inn of the infamous King Henry VIII! Combination dinner-show (with the accent on show) featuring mimes, jestors, royalty and singing wenches brings you to your feet with fun! Thursday through Sunday only. Group rates, too.

MARBLE HALL, 615 Main, located in the Sheraton downtown, 842-6090. Downtown's newest spot that perpetuates the legend of Kansas City's once famous saloon where the clientele was said to include Wild Bill Hickock, Bat Masterson, Wyatt Earp and others. Featuring hefty drinks, steaks, seafood and unique dishes, all at a modest price.

MINSKY'S PIZZA, Four locations... 63rd & Quivira, 268-9000, 5105 Main, 561-5100, 10630 Metcalf, 341-9292, 4362 S. Noland Rd., 373-9500. Minsky's Pizza locations are popping up all over town. In three years, Kansas City's own thick, luscious Minsky's Pizza has become famous with local families who enjoy the tasty concoctions and turn-of-the-century decor with Tiffany lamps and stained glass. Minsky's Pizza and Pasta at 5031 Main.

RED OWL RESTAURANT AND LOUNGE, I-29 & HH exits, Platte City, MO., 431-2987. Six miles north of KCI, serving home-cooked meals 6 a.m. to midnight seven days per week. Menu features steak, broasted chicken & fish complete with soup and salad bar, plus homemade desserts. Lounge open till 1 a.m. nightly. Dance to our fine Country & Western bands Friday & Saturday nights.

REGAN'S WESTPORT ONE, 1022 Westport Road, Kansas City, MO., 931-1448. Warm woods, greenery and draped booths create an intimate atmosphere for leisure dining. Specializing in lobster, prime rib, crab legs and steak; all accompanied by complete soup and salad bar. 11 a.m. to 11 p.m. Monday through Saturday. Lively entertainment, dancing in lounge nightly. Banquet facilities. Free parking.

KC EXPERIENCE

continued from page 26

an educational, family adventure in a colorful setting. Mid-Kansas City's Loose Park boasts lush rose gardens, a lagoon and free summer outdoor theatre presentations by the Parks and Recreation Department.

Kansas City's forefathers made special provisions for the education and art of the area. Some of the region's most significant artifacts are housed in the Kansas City Museum of History and Science. An adjoining planetarium provides a year-round opportunity for serious space study. Rising stately behind beautiful statues and fountains in Volker Park is one of the finest art galleries in America, the Nelson Gallery of Art and Atkins Museum. Recently the site of two nationally-acclaimed exhibitions, The Archaeological Finds of the People's Republic of China and Sacred Circles—Two Thousand Years of North American Indian Art, the Nelson houses a permanent collection of Oriental art which is considered by experts

to be the most complete anywhere outside the Far East.

The life and career of the area's leading citizen is re-created in the Harry S Truman Library in Independence, Mo. The national landmark has preserved the 33rd President's administration with more than 10 million papers, books and historical relics of international significance. Truman's white frame Victorian home is only four blocks away.

Kansas City—where the past is in harmony with the present. It's a city of fountains, activity, excitement and family fun. It's a big city with small-town friendliness where visitors feel welcome.

For additional information on these and other attractions, we suggest you call the Convention and Visitors Bureau at 221-7555 or write to them for a visitor packet at their new offices in City Center Square, Kansas City, Mo., 64105.

For a daily listing of what's happening in the Kansas City area, call the Visitor Information Phone (VIP) at 474-9600.

OPEN EVERY DAY

TROPICAL
RAIN FOREST

ANIMALS
& MAN

ANIMAL
KINGDOM

ANIMALS
OF DARKNESS

ELEPHANT
TRAINING

VISIT THE
"WORLD FAMOUS"

Topeka Zoo

In Gage Park, Topeka, Ks.
Off I-70 at Gage Blvd. Exit

Phone
913-272-5821

Present this ad for
a free guide book

INDUSTRIAL • MEDICAL AND SPECIALTY GASES



Air Products

9725 ALDEN ROAD / LENEXA, KANSAS 66215

(913)492-1550

isis

foods, inc.

1500 WEST 12th STREET
KANSAS CITY, MISSOURI 64101

HOME OF



The World's Finest Foods
Processed by the
World's Finest Packers

MEMBER



&



Also
ST. LOUIS & WICHITA

The new

L&L SUPPLY

Kansas City

3160 Terrace
Kansas City, Mo., 64111
816-756-0456

Star
CRETORS
GOLD MEDAL PRODUCTS

POPCORN, OIL AND SEASONING SALT
POPCORN BAGS AND CARTONS
COTTON CANDY EQUIPMENT
PAPER AND PLASTIC CUPS
CONCESSION EQUIPMENT
FOUNTAIN PRODUCTS
ICE CREAM CONES
SANDWICH BAGS
COCA-COLA®
CANDY

We supply **EVERYTHING** for a profitable concession operation!
SALES SERVICE RENTALS



23"-29"-36" Wingspan

Eagle Wall
Plaques

- CUSTOM FLAGS •
 - BANNERS •
- OUR SPECIALTY

DISPLAY THE FLAG!

U.S. -STATE &
FOREIGN FLAGS
ALUMINUM—STEEL &
FIBERGLASS FOR
HOME AND
INDUSTRY

816-842-8798

"The Complete Flag Dealer"

**All Nations
CAPITOL
Flag & Banner Co.**

118 West 5th Street
Kansas City, Missouri 64105



**OVER 50 YEARS OF
RELIABLE SERVICE**

All American

FIREWORKS

**PRODUCERS OF
SPECTACULAR FIREWORKS**

**Main Office and Warehouse:
208 Broadway
Kansas City, Missouri 64105
Telephone: 842-9299 / 221-3363
Area Code 816**



**ALSO
Commercial
Fireworks**

**Industrial Smoke
for Air Flow and
Water Pollution
Control**

**Special Effects for
Theatrical Acts**



LAMAR HUNT

Chairman of Worlds of Fun

Although the past two decades have seen tremendous accomplishments in professional sports for Lamar Hunt, he has also been very successful as owner and chairman of the board of Kansas City's Worlds of Fun. Along with President Jack Steadman, his objective, in developing the 153-acre family theme park was to create a unique environment so that "When a family enters our park, it will truly feel it has left the real world behind and walked into a world of fantasy and fun," Hunt stated.

Lamar Hunt's aspirations have not only come true, they have flourished. Since the park first opened in May of 1973, 6,671,931 visitors have passed through the turnstiles. The guests have enjoyed over 85,000,000 rides, 23,000 live show performances and many other features including the Cotton Blossom, a stern-wheeler riverboat formerly used in the movie "Show Boat," purchased at a studio backlot sale by Hunt. Perhaps Lamar's greatest satisfaction comes from Worlds of Fun's significant impact on the local economy. Nearly 60% or approximately 4,000,000 of the guests have come from outside the metropolitan area generating a tremendous boost to Kansas City's tourism industry. Worlds of Fun is also the area's largest employer of young people, with over 14,000 having worked at the park in its six years of operation.

Hunt looks upon the multi-million dollar investment necessary for Worlds of Fun as a dividend. It represents a reinvestment in the Kansas City area as a result of the success of the Kansas City Chiefs Football Club.

Hunt's other ventures into sports are widely known. He organized and coordinated the formation and development of World Championship Tennis, formed the Dallas Tornado Soccer Club of the North American Soccer League, and was one of founding owners of the NBA Chicago Bulls.

His greatest sports achievement, however, began in 1959 when at the age of 26, Hunt formed the American Football League and served as its first president. His franchise, the Dallas Texans, won the league championship in 1962 and after moving to Kansas City, continued the success as the Chiefs, winning the Super Bowl in 1969. After the American and National Football Leagues merged, Lamar's achievements were recognized in 1972 when he became the first AFL figure to be enshrined in the Pro Football Hall of Fame.

Hunt is active in community and civic affairs both in his hometown Dallas and in Kansas City. A member of the board of trustees of the Pro Football Hall of Fame and on the board of directors of NFL Charities, Hunt also serves on the national board of trustees of the Fellowship of Christian Athletes, is a member of the board of directors of the Great Midwest Corporation and is on the board of directors of the National Parks Foundation.



JACK STEADMAN

President of Worlds of Fun

The development of Worlds of Fun has been a long-term project for Jack Steadman, president and part-owner of Mid-America Enterprises, the holding company for the 153-acre family theme park. In fact, Jack began to develop his ideas about an internationally-themed park after a trip to Disneyland with his family in 1957. The idea crystallized when Worlds of Fun opened for the first time in May of 1973.

As Jack said when construction was announced, a theme park "Doesn't just happen." There were numerous discussions with Worlds of Fun's Chairman of the Board Lamar Hunt, before the venture received the go-ahead in 1966. In 1969, the site had been selected and construction began in late 1971. At the groundbreaking ceremonies Steadman summarized his plans for the park when he explained the rationale behind the design of the park's colorful logo. "The large multi-colored ascension balloon was chosen as the park's symbol because it represents fun, adventure and travel reminiscent of the movie 'Around the World in Eighty Days.' These are the things we want Worlds of Fun to represent."

Jack Steadman's relationship with Lamar Hunt began through pro football. Jack, considered to be one of the top administrators in professional athletics, has been the head of the Kansas City Chiefs administrative staff since November of 1960 when Hunt named him general manager of the Dallas Texans. He was promoted to executive vice president and general manager in 1966 and in August 1976 was named president of the Kansas City Chiefs in charge of all operations.

Overseeing the development of Worlds of Fun was a tremendous undertaking, but challenges are Jack's forte. It was Jack who conceived the idea of Kansas City building two stadiums at the Harry S Truman Sports Complex.

Despite a demanding work schedule, Steadman remains active in numerous civic affairs. As a member of the board of directors, he serves as vice president of membership and meetings for the Chamber of Commerce of Greater Kansas City. In 1978, he served as chairman of the corporate division of the United Way in addition to being a member of the United Way executive committee and board of directors. His other civic endeavors include being a member of the Civic Council of Greater Kansas City, on the executive committee and board of directors of Starlight Theatre Association, the board of directors of the Kansas City Sponsor Chapter of the Fellowship of Christian Athletes, a member of the board of directors of the American Royal Association and an advisory trustee for Research Medical Center.

ONLY AT WORLDS OF FUN



- 363 **Screamroller tee**
Solid Colors: Lt. Blue,
Yellow, or Tan
Adult Sizes Only: S, M, L,
or XL \$5.00 ea.
- 372 **Black tee with Silver Comet**
Adult Sizes Only: S, M, L,
or XL \$6.50 ea.
- 483 **High Crew tee with Vertical
Wording**
Colors: Yellow, Tan, or
Lt. Blue
Adult Sizes Only: S, M, L,
or XL \$6.50 ea.
- 351 **White tee with Balloon**
Youth Sizes Only: S/4,
M/6-8, L/10-12, or
or XL/14-16 \$3.50 ea.
- 376 **Blue Heather tee with
Balloon**
Youth Sizes Only: S/4,
M/6-8, L/10-12, or
or XL/14-16 \$5.00 ea.
- 160 **Plastic Mug with Lid** \$1.49 ea.
- 1088 **Acetate Visor with Park
Name** \$2.50 ea.
- 1027 **Acetate Visor with Park
Name** \$2.50 ea.
- 5915 **Belt Buckle with Leather
Front** \$3.50 ea.
- 286 **Single Deck Playing Cards** \$1.29 ea.
- 169 **Penlite Flashlight with
Park Name** \$2.59 ea.
- 407 **Pewter Spoon with Park
Motif** \$2.99 ea.
- 310 **Silver Finish Souvenir
Spoon** \$1.99 ea.
- 324 **Sterling Silver Balloon
Charm** \$5.00 ea.
- 478 **Charm of Park Costume
Characters** \$2.00 ea.
- 193 **Embroidered Patch-3" size** \$1.25 ea.
- 445 **Fright Fuel Double Old
Fashion Glass** \$1.79 ea.
- 331 **1 1/2 oz. Jigger with Balloon** \$.89 ea.
- 180 **1 1/2 oz. Jigger with Gold
Stars** \$1.25 ea.
- 348 **Vinyl Bumper Strip** \$.35 ea.
- 7514 **Guide Book** \$1.25 ea.
- 7513 **Mini Album** \$.59 ea.
- 7511 **Accordian Folder** \$.59 ea.

WORLDS OF FUN • 4545 WORLDS OF FUN AVENUE • KANSAS CITY, MO 64161

Sold to: Name _____
Street _____
City & State _____
Phone No. _____ Zip Code _____

Please check method of payment:

Check or Money Order (payable to Worlds of Fun)
 Visa Master Charge Expiration Date _____
 Credit Card No. _____
 Master Charge Interbank No. (located above your name) _____

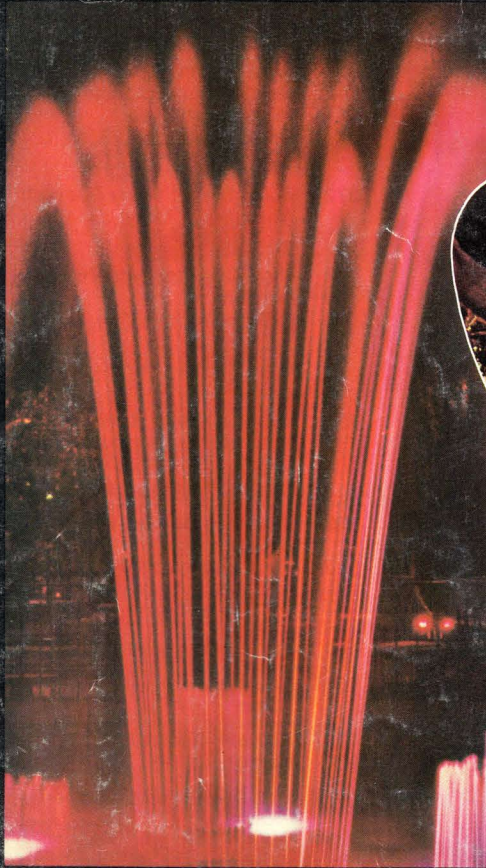
Signature _____

Qty.	Item No.	Description	Size/ Color	Cost Each	Total

Total _____
 (Mo. Res. Only) 4% Sales Tax _____
 Postage & Handling \$1.50 _____

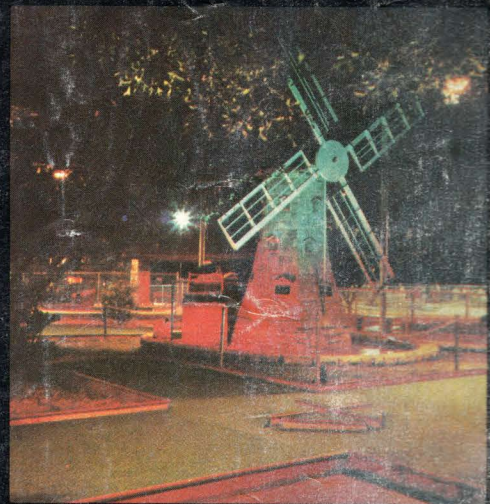
Grand Total _____

Just Minutes Away
From the Fabulous
Worlds of Fun...

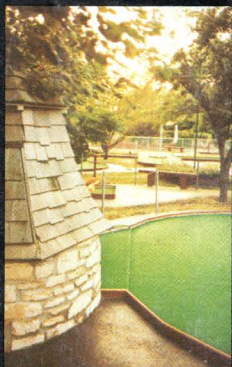
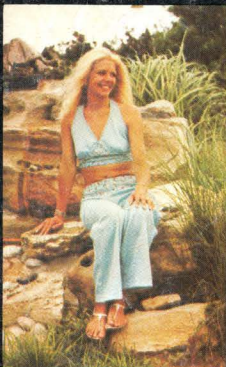
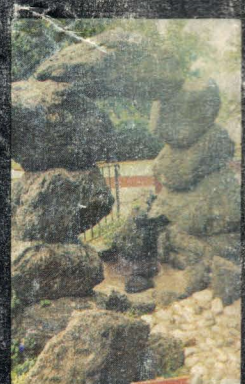


54 Holes of "Garden" Miniature Golfing Plus Huge Indoor Game Center.

The romantic atmosphere of mellow music, soft lights, waterfalls and statuary... seem to whisper "love and enjoy me" to those who pass through our Garden Golf Complex. Truly a nostalgic setting in nature.



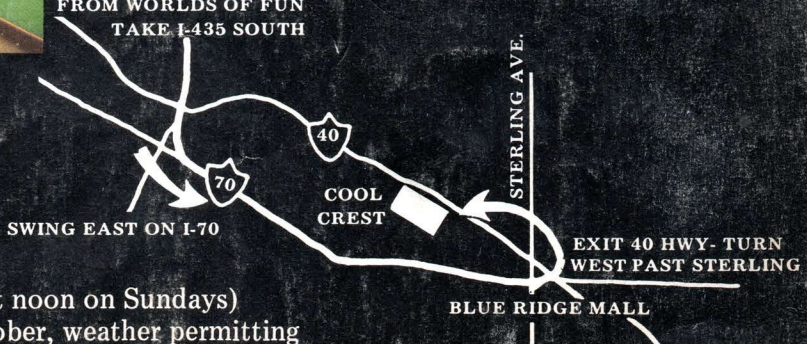
Daytime and evening hours become play-time hours at Cool Crest. A family haven for relaxation in a clean, wholesome environment.



10735 East 40 Hiway...
½ mile West of the
Blue Ridge Mall.
Phone 358-0088

COOL CREST

435
FROM WORLDS OF FUN
TAKE I-435 SOUTH



Open 10 a.m. 'til midnight (Open at noon on Sundays)
Garden Golf continues 'til mid October, weather permitting