

For 1992



Worlds of Fun Oceans of Fun

KANSAS CITY



Ride into the torrential power of the MONSOON, a thrilling new water adventure for the whole family. This is one ride where you'll all be in the same boat! First as you climb to new heights. Then as you're thrust wildly into the very eye of the storm.

And, in a first for Worlds of Fun and Oceans of Fun, this new ride allows you to enter from EITHER park! So it's a part of your fun wherever you plan to spend your day.



1992

Worlds of Fun Oceans of Fun

Worlds Of Fun 1992 Schedule

Spring	April 4-May 17	Open 10 a.m.
	Saturdays	Open 10:30 a.m.
	Sundays	
Summer (Daily)	May 23-August 30	
	Saturdays	Open 10 a.m.
	Sunday thru Friday	Open 10:30 a.m.
	Tuesdays in July & August only	Open 10:00 a.m.
Fall	September 5-November 1	
	Saturdays	Open 10:00 a.m.
	Sunday	Open 10:30 a.m.
Closed	August 31 through September 4	

Worlds Of Fun 1992 Rates

A Passport ticket includes admission to all rides, shows and attractions, excluding the Forum Amphitheatre. (Children three and under are free.)

Adult One-Day Passport	\$21.95
Child/Senior Citizen One-Day Passport (Child 4-11, Senior Citizen-60 or older)	\$14.95
Two-Day (Worlds of Fun) or Two-Park (Adult, Child or Senior Citizen/Two Park-Worlds of Fun & Oceans of Fun)	\$26.95
Individual Season Passport (Unlimited use, includes Forum concerts)	\$49.95
Oceans of Fun Bonus Season Passport (When you purchase Worlds of Fun)	\$24.95
Family Season Passport (Minimum purchase of 3)	\$42.95

*One-Day Passports sold at full rate after 3 p.m. are valid for use next day also. Prices do not include applicable state and local taxes.

Oceans Of Fun 1992 Schedule

May 23-August 30 (Daily)	
Saturdays and Sundays	Open 10 a.m.
Monday through Friday	Open 10:30 a.m.
September 4-7 (Daily)	Open 10 a.m.
Closed August 31 through September 3	

Oceans Of Fun 1992 Rates

One Passport ticket includes all attractions. (Children three and under are free.)

Adult One-Day Passport	\$14.95
Child/Senior Citizen One-Day Passport (Child 4-11, Senior Citizen-60 or older)	\$11.95
Two-Day (Oceans of Fun)	\$22.95
Two-Park (Adult, Child or Senior Citizen/Two Park-Worlds of Fun & Oceans of Fun)	\$26.95
Individual Season Passport	\$49.95
Worlds of Fun Bonus Season Passport (When you purchase Oceans of Fun)	\$24.95
Family Season Passport (Minimum purchase of 3)	\$42.95

*One-Day Passports sold at full rate after 3 p.m. are valid for use next day also. Prices do not include applicable state and local taxes.

Important Numbers

Worlds of Fun Information	(816) 454-4545
Sprint's Hotel/Motel Reservations Call TOLL FREE (In Kansas City call 453-7280)	1-800-877-4FUN
Group events and Picnics are our specialty. Group rates available for 15 or more. Call (816) 454-4545, Ext. 8200 or write:	
Group Sales, 4545 Worlds of Fun Avenue, Kansas City, MO 64161	

Find Worlds of Fun and Oceans of Fun on the east loop of I-435, Exit 54



What's New For 1992



Spend your day in the sun at Oceans of Fun and then stroll over to Worlds of Fun for an evening of excitement. Or take an afternoon dip at Oceans of Fun after your fun-filled day at Worlds of Fun. Either way, you can walk from one park to the other through the **SameDay Gateway**. Available anytime both parks are open at a special savings.



At Oceans of Fun, you'll want to plunge into the fun of the all-new **COCONUT COVE**, a huge new **SUPERPOOL** for kids and adults! It's a **COCONUTTY** place that features all sorts of tropical fun. It's where you can drop into the cool blue depths from swinging vines. Ride a friendly shark. Or just float lazily along on log rafts. At **COCONUT COVE**, there's fun in the sun for all.



Come party with the world's wildest 20-year-old as Worlds of Fun and Oceans of Fun make 1992 a year to celebrate!



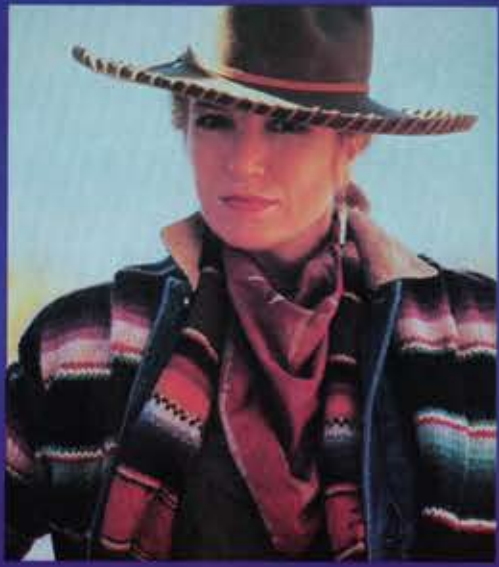
Three beastly roller coasters await you, including the world's #1 rated Timber Wolf.

Be A Fest Guest

Fun sets the theme to the special festivals throughout our 20th Birthday Bash season at Worlds of Fun. Like KidsFest in June hopping with all kinds of kid stuff they'll love. Or the patriotic, week-long Celebrate America in July. Bop on back to the Big Thrill Festival in September and enjoy old world fun at Oktoberfest in October.



A Year Long Birthday Celebration!

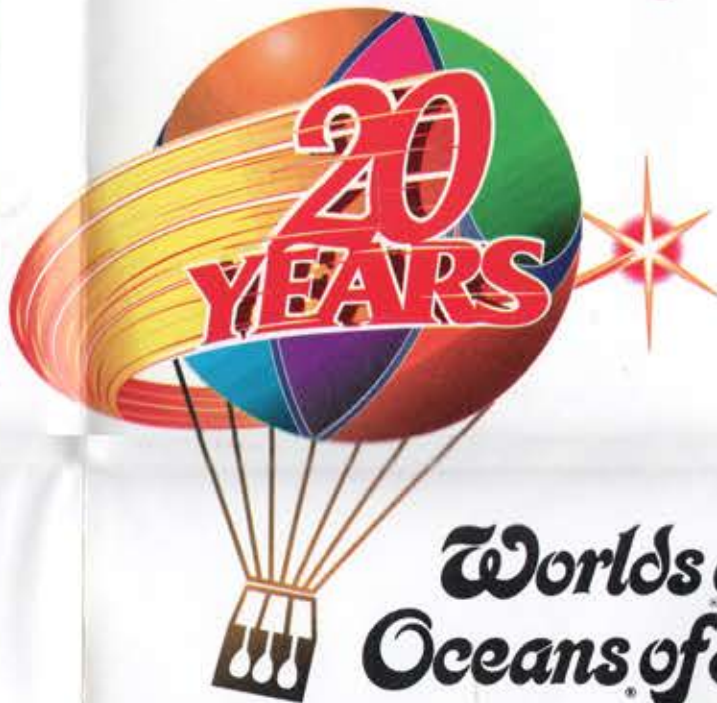


There'll be some names dropping your way. So listen up. Because our 1992 concert series is your front row seat to performances by stars like Tanya Tucker and Kathy Mattea.

May 9 Carman
 May 23 & 24 Ricky Van Shelton
 June 21 Riders In The Sky
 June 29 thru July 2 Marty Stuart and Asleep At The Wheel
 July 3 thru July 5 Lorrie Morgan
 July 12 Tanya Tucker
 July 26 Kathy Mattea
 August 9 Mark Chesnutt
 The 1992 Country Concert Series is sponsored by KFKF FM Radio.
 All talent and performances subject to a 30-day cancellation without notice by artist.



Find yourself in the eye of the storm and at the edge of your seat on our newest ride - The Monsoon.



Worlds of Fun
Oceans of Fun
 KANSAS CITY

Defy your sensibilities - and gravity too - and let the Orient Express propel you through mind boggling twists and turns.



You'll wish you were a fish after you see The Fins and Flippers Dolphin Show. Who'd have thought Dolphins could have so much fun. And you too!



Whether it's the sheer drop of Typhoon's two racing slides, the churning,

turning rush of Diamond Head, or the kid size animal slides in Crocodile Isle, this is one slide show you won't want to miss!



If it has anything to do with water, it's here at Oceans of Fun. And it's fun for everyone!



From exotic to exhilarating, Coconut Cove beckons adults and kids alike!