

Worlds of Fun

2008 OPERATING CALENDAR

9 AM - 6 PM	10 AM - 8 PM	10 AM - 11 PM	11 AM - 7 PM
10 AM - 6 PM	10 AM - 9 PM	11 AM - NOON	6 PM - 11 PM
10 AM - 7 PM	10 AM - 10 PM	11 AM - NOON	

JULY	AUGUST
S M T W T F S	S M T W T F S
6 7 8 9 10 11 12	3 4 5 6 7 8 9
13 14 15 16 17 18 19	10 11 12 13 14 15 16
20 21 22 23 24 25 26	17 18 19 20 21 22 23
27 28 29 30 31	24 25 26 27 28 29 30

APRIL
S M T W T F S
1 2 3 4 5
6 7 8 9 10 11 12
13 14 15 16 17 18 19
20 21 22 23 24 25 26
27 28 29 30

MAY
S M T W T F S
1 2 3
4 5 6 7 8 9 10
11 12 13 14 15 16 17
18 19 20 21 22 23 24
25 26 27 28 29 30 31

JUNE
S M T W T F S
1 2 3 4 5 6 7
8 9 10 11 12 13 14
15 16 17 18 19 20 21
22 23 24 25 26 27 28
29 30

Oceans of Fun

MAY	JUNE
S M T W T F S	S M T W T F S
4 5 6 7 8 9 10	1 2 3 4 5 6 7
11 12 13 14 15 16 17	8 9 10 11 12 13 14
18 19 20 21 22 23 24	15 16 17 18 19 20 21
25 26 27 28 29 30 31	22 23 24 25 26 27 28

JULY	AUGUST
S M T W T F S	S M T W T F S
6 7 8 9 10 11 12	3 4 5 6 7 8 9
13 14 15 16 17 18 19	10 11 12 13 14 15 16
20 21 22 23 24 25 26	17 18 19 20 21 22 23
27 28 29 30 31	24 25 26 27 28 29 30

SEPTEMBER
S M T W T F S
1 2 3 4 5 6
7 8 9 10 11 12 13
14 15 16 17 18 19 20
21 22 23 24 25 26 27
28 29 30

OCTOBER
S M T W T F S
1 2 3 4
5 6 7 8 9 10 11
12 13 14 15 16 17 18
19 20 21 22 23 24 25
26 27 28 29 30 31

NOVEMBER
S M T W T F S
1 2 3 4 5 6 7 8
9 10 11 12 13 14 15
16 17 18 19 20 21 22
23 24 25 26 27 28 29
30

2008 OPERATING CALENDAR

11 AM - 6 PM	10 AM - 6 PM	10 AM - 7 PM	10 AM - 8 PM
--------------	--------------	--------------	--------------

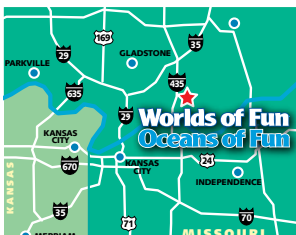
Worlds of Fun & Oceans of Fun reserve the right to be closed to the public and Season Passport holders for private events and other reasons.

2008 GATE PRICES (prices do not include tax)

	WORLDS OF FUN	OCEANS OF FUN
Regular*	\$ 38.99	\$ 27.99
Junior/Senior**	\$ 14.99	\$ 14.99
Twilight (after 4 pm when park closes 8 pm or later; after 3 pm when park closes 7 pm or earlier)	\$ 19.99	\$ 17.99
Ride & Slide Regular* (both parks, same day)	\$ 51.99	\$ 51.99
Ride & Slide Junior/Senior** (both parks, same day)	\$ 29.98	\$ 29.98
Two-Day Regular* (1 park, 2 consecutive days)	\$ 53.99	\$ 41.99
Two-Day Ride & Slide Regular* (both parks, 2 consecutive days)	\$ 63.99	\$ 63.99
Regular* Season Passport (single-park, all season)	\$ 79.95	\$ 74.95
Gold Pass Regular* (both parks & parking, all season)	\$ 109.95	\$ 109.95
Platinum Pass Regular* (all Cedar Fair parks & parking, all season)	\$ 150.00	\$ 150.00
Junior/Senior** Season Passport (single-park, all season)	\$ 59.95	\$ 59.95
Gold Pass Junior/Senior** (both parks & parking, all season)	\$ 79.95	\$ 79.95
Platinum Pass Junior/Senior** (all Cedar Fair parks & parking, all season)	\$ 89.95	\$ 89.95
RipCord 1 person flight \$27.95 2 person flight \$22.95/person 3 person flight \$16.95/person		
Grand Prix Raceway 1 ride \$5.00 2 consecutive rides (same person) \$8.00		
The Rock 2 climbs (same person) \$5.00		

*Guests 48" in height or taller in shoes (in bare feet at Oceans of Fun).

**Guests ages 3 & older AND less than 48" in height; Ages 62 & older; Ages 2 & younger are free



SAVE TIME & MONEY WHEN YOU BUY E-TICKETS AT WORLDSOFFUN.COM.

GROUP RATES Discounts are available for groups of 15 or more. Advance reservations are required. Call Group Sales at 816.303.5135.

WORLDS OF FUN VILLAGE RESORT

To book reservations, call 1.800.877.4FUN, 816.453.7280, or visit worldsoffun.com.

We are conveniently located in Kansas City, MO on the east loop of I-435 at Exit 54.

No refunds or rain checks. Dates, times, prices, & attraction availability are subject to change without notice. Food & beverages may not be brought inside parks. Limited ride availability on September 26, October 3, 10, 17, 24, 30, & 31, 2008.

4545 WORLDS OF FUN AVENUE • KANSAS CITY, MO 64161 • 816.454.4545

Cedar Fair Entertainment Company,®

PEANUTS © UFS, Inc.

350M/WF08-023

Kansas City, MO



RIDE ON

WORLDSOFFUN.COM

Worlds of Fun RIDE ON

Who knew that something that began 35 years ago would be just what we need for the way we live today? Before the Internet...before all those high-tech gadgets existed, there was Worlds of Fun.

Take some time to unplug, then reconnect at Worlds of Fun and Oceans of Fun!

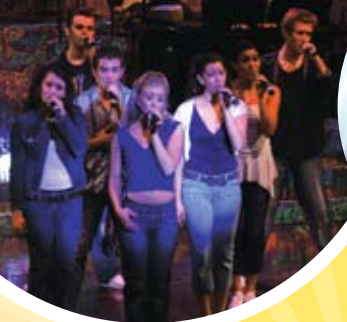


ENJOY BOTH PARKS ON THE
SAME DAY & SAVE MONEY
with Ride & Slide Admission!

Oceans of Fun SLIDE ON



Cabana Rentals
Private Cabana Rentals!
Call 816.303.5230



"CELEBRATE AMERICA" FESTIVALS

Special concerts, food, and shows!
Every weekend, July 4 – August 3, 2008.

SMILE ON

THERE'S SOMETHING FOR EVERYONE!

From family fun
to rides just for kids
to live shows,
there is entertainment
for guests of all ages.



Oktoberfest

September 6, 7, 13 & 14, 2008!



Meet the world-famous
PEANUTS
CHARACTERS



SNOOPY BIRTHDAY PARTIES!

Call 816.303.5240



Worlds of Fun VILLAGE

STAY WHERE YOU PLAY!

- Cozy Cottages
- Cool Log Cabins
- RV Sites with Full Hookups
- Free Wi-Fi
- Swimming Pool
- Store, Showers, Arcade, & More
- Walking Distance To Both Parks
- Special Discounts on Admission Tickets for Registered Guests

For more information or reservations, call **800.877.4FUN,**
816.453.7280, or book online at **worldsoffun.com.**



SAVE MONEY WITH ADMISSION & MEAL PACKAGES!

Packages include Park Admission & All-You-Can-Eat BBQ Meal

Joe Cool's Backyard BBQ at Worlds of Fun	\$30.99
Oceans of Fun Beach BBQ at Oceans of Fun	\$27.99
Ride & Slide & BBQ (both parks & meal)	\$40.99

*Prices are per person. Junior/Senior discounts available.
Advance Reservation & Payment Required. Limited Availability.*

Call **816.303.5135**
or buy online at **worldsoffun.com**



HALLOWEEN HAUNT

at Worlds of Fun

Everyone's
DYING
to Get In!

Intense Scares by Night

Dare to explore EIGHT extreme haunts, including a cursed asylum, a vampire lair, a deserted summer camp, a fog-filled creature zone, a gothic cemetery, a possessed slaughterhouse, an evil carnival, and a new surprise for 2008!



Scare-Free Family Fun by Day

Have no fear, the monsters only come out at night! Kids and families enjoy a magical house, spooky shows, Trick-or-Treat Town, and Camp Spooky.

Trick-or-Treat Town
Presented by 

The Haunt is frightening after 7 p.m. Limited attraction availability on Friday nights & Thursday, October 30. Limited extreme haunt availability on Sundays.

One Ticket, No Limits!

Halloween Haunt attractions are included with admission to Worlds of Fun, so you can take a spin on your favorite rides AND enjoy all the Halloween fun!